



**2021 / 2022**

# **Action Plan Summary**

TO DELIVER PROJECTS HIGHLIGHTED BY THE 2021 / 2022 CANTERBURY  
COMMUNITY SAFETY PARTNERSHIP STRATEGIC ASSESSMENT

Produced by: Canterbury Community Safety Unit

## Introduction

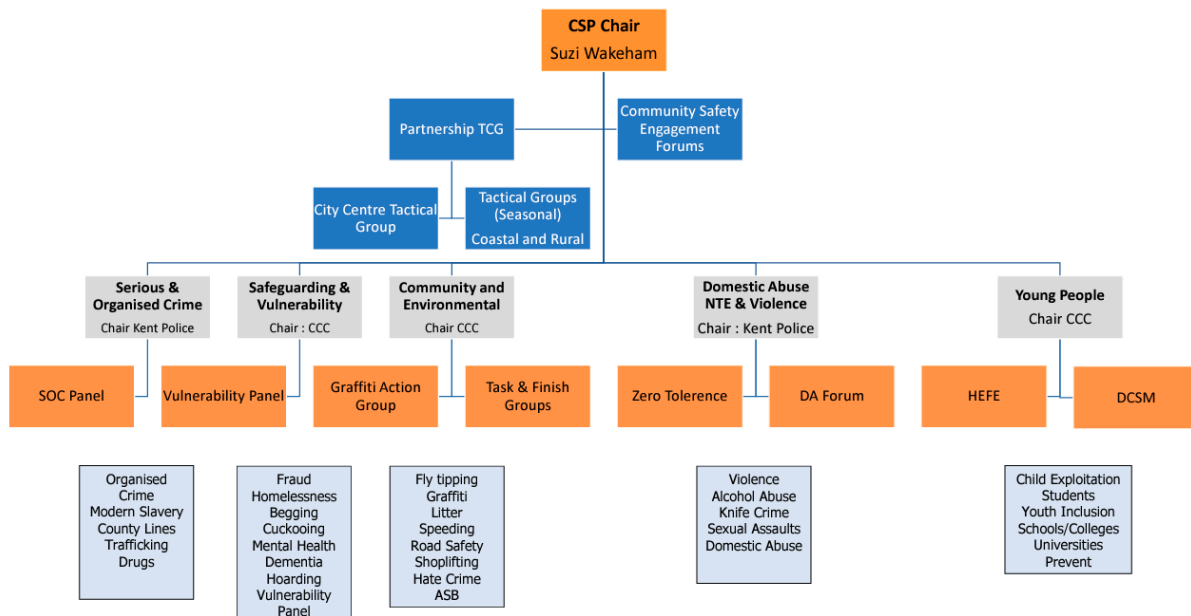
The Canterbury Community Safety Partnership (CSP) is made up of statutory agencies brought together under a shared responsibility placed upon them by the Crime and Disorder Act 1998. The CCSP is responsible for completing an annual Strategic Assessment (“SA”). The purpose of the strategic assessment is to provide an analytical basis for the Canterbury Community Safety Partnership to develop a community safety plan for the district to respond, monitor, support and help target the activities of the Partnership. The assessment identifies the emerging priorities by identifying patterns of crimes, antisocial behaviour (ASB) drug or alcohol misuse, reoffending and current trends. This enables the Canterbury Community Safety Partnership to be more responsive to changing situations so that the direction of strategic work remains focused on matters that are of the most importance.

### Canterbury CSP Key Priorities:

- Serious and Organised Crime
- Safeguarding and Vulnerability
- Community and Environmental
- Domestic Abuse, Night-time Economy (NTE) & Serious Violence
- Young People

### Community Safety Partnership Structure

In the flow chart you can see the topics each priority covers



## **Forums which CSP attend to feed into the Priorities**

Serious and Organised Crime

Serious and Organised Crime Panel

Safeguarding and Vulnerability

Vulnerability Forum

Safeguarding Meeting

Channel Panel

District Contextual Safeguarding Meeting (DCSM)

Safer Suicide Committee

Community and Environmental

Graffiti Multi Agency Forum

Task & Finish Meetings

Domestic Abuse, Night-time Economy (NTE) & Serious Violence

Zero Tolerance Forum

Domestic Abuse Forum

Young People

Higher Education / Further Education Forum

District Contextual Safeguarding Meeting (DCSM)

Outside of these we also have Tactical Coordinating Group (TCG) meetings to discuss incidents on a weekly basis.

## **Funding**

We are able to apply for funding from a number of places including but not limited to:

Kent Police Crime Commissioner's office,

Home Office,

Kent Community Safety Partnership,

Safer Kent,

Kent County Council.

## **Accountability**

Summary reports are presented to an Executive Community Safety Partnership board to monitor actions, agendas and finances.

We are also externally and independently assessed.

## 2021 / 22 CSP Action Plan

Detailed below is a summary of the Canterbury Community Safety Action Plan for practitioners including a list of a number of proposed projects and objectives for partners to complete this period.

### Serious and Organised Crime

Develop a communications plan for all partners and business around SOC and key indicators.

Distribute leaflets in various languages regarding Modern Day Slavery

Targeted Operations

Develop schemes to raise awareness of scams involving Fraud

### Safeguarding and Vulnerability

VTG Forum

Awareness Campaigns

Promote ASK ANI

National Safeguarding Week

Neighbourhood Engagement Days

### Community and Environmental

Freshers Fairs and Student themed information sharing

Student Safety Toolkit 'Student Code'

Targeted Operations

Pop-up Safety Hubs

Tackling Graffiti Programme

Think - Park - Smart

Speed Watch

### Domestic Abuse, Night-time Economy (NTE) & Serious Violence

Domestic Abuse Awareness Webinar and Supporting Toolkit

Love Grace campaign

Promotion of Safety Campaigns, Zero Tolerance, Ask Angela, Safe Taxis, Lit Routes

Bystander Training

Create & Launch Connected Routes campaign to encourage use of safe routes between City and residential areas.

Targeted Operations

NTE Safety Hubs

Promote Purple Flag Campaign

## Young People

Drugs and Gangs awareness training and support for those on the fringes and at risk.

Education in schools

Tackling Knife use Art Competition by young people displayed in City

New Schools Police Officers to be appointed and positioned across Schools

Detached and Centre based youth work delivery by KCC

Promote use of Fearless Campaign in Schools and universities.

District Contextual Safeguarding Meetings with referrals from Schools

Linking in regularly with the Local Children's Partnership Group and supporting actions and funding regarding Reconnect funding to promote development of children and young people building relationships through Covid.