

## Canterbury City Council: Summary of Accounts for year ending 31 March 2016

Our accounts show you how we are managing the money we receive to provide services to residents and visitors and to look after our environment.

The [Statement of Accounts](#) has been prepared using proper accounting practice. The style and content can be difficult to follow if you are not an accountant. This summary gives the key information in a simpler and more meaningful way and some modifications have been made in order to do this.

### Income and expenditure

Our Revenue Account shows the cost of services for the year and where the money came from to pay for them.

Table 1

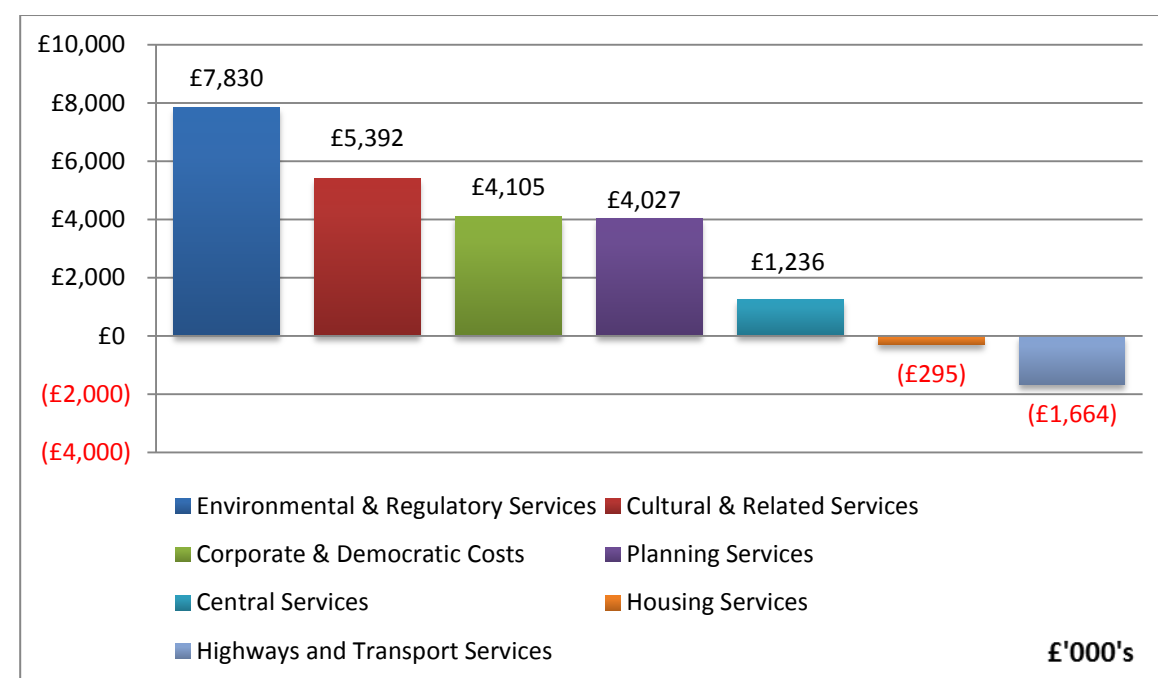
	Gross expenditure	Gross income	Net expenditure (1)
Cultural & Related Services	20,516	(15,124)	5,392
Environmental & Regulatory Services	10,899	(3,069)	7,830
Planning Services	11,476	(7,449)	4,027
Highways	2,408	(289)	2,118
Parking Services, Public Transport & Harbour	5,828	(9,609)	(3,782)
Housing Revenue Account (HRA)	24,197	(26,010)	(1,813)
Housing Benefits	48,360	(47,995)	366
Other Housing Services (Non HRA)	2,272	(1,120)	1,152
Central Services	2,705	(1,468)	1,236
Corporate & Democratic Core	7,872	(3,766)	4,105
Non-Distributed Costs	118	0	118
<b>Totals</b>	<b>136,651</b>	<b>(115,899)</b>	<b>20,749</b>
Other Operating Expenditure	1,240	(2,407)	(1,167)
Corporate Income and Expenditure	6,358	(1,361)	4,997
<b>Leaving, to be funded from government grants and taxation</b>	<b>144,249</b>	<b>(119,667)</b>	<b>24,579</b>
Capital Grants and Contributions	0	(2,416)	(2,416)
Council Tax	417	(9,726)	(9,309)
Government grants*	54	(12,138)	(12,084)
<b>Total (2)</b>	<b>144,720</b>	<b>(143,947)</b>	<b>770</b>
<b>Income and expenditure deficit for year</b>			<b>770</b>

General fund share of deficit on provision of services	1,708
Statutory Accounting Adjustments	(3,631)
Transfer from reserves	1,884
<b>Increase in general fund balance for the year</b>	<b>(40)</b>
General fund balance at 31 March 2015	(4,420)
General fund balance at 31 March 2016	(4,460)
<b>Increase in general fund balance for the year</b>	<b>(40)</b>

\* Government Grants = Revenue Support Grant £3,238,000, Non-domestic Rates £5,884,000, New Homes Bonus £3,016,000.

### What we spent

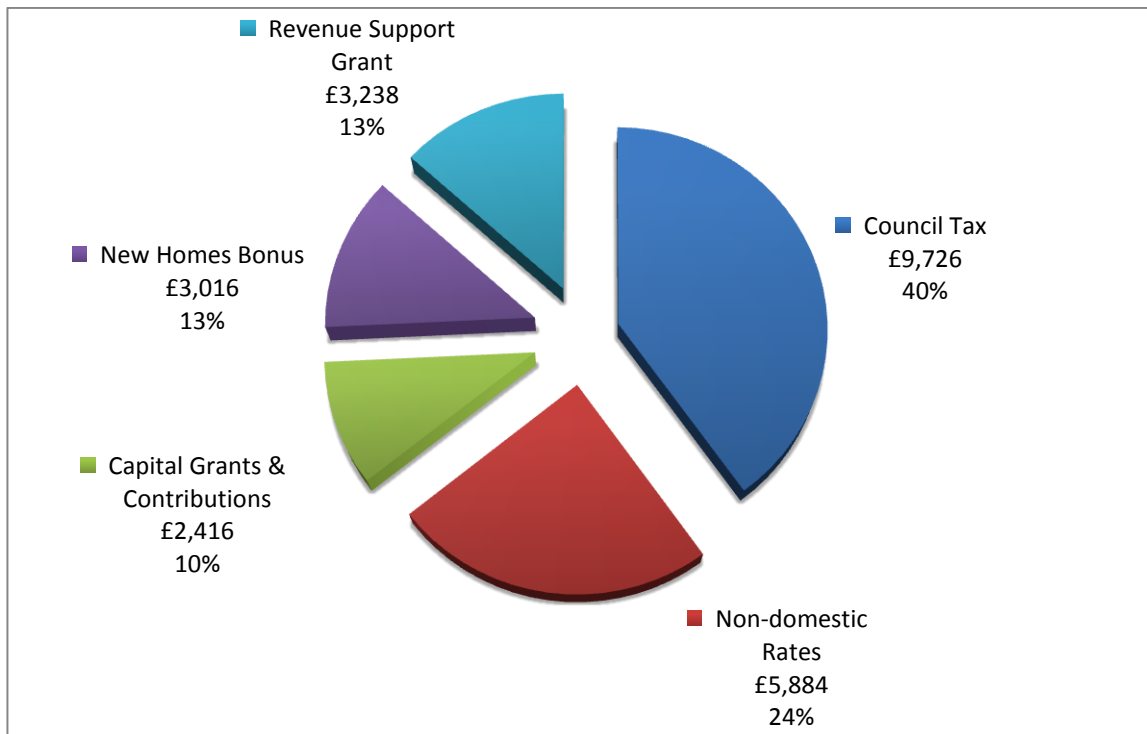
Bar chart 1 shows the net expenditure for each of the main service areas -see (1) in table 1



Bar chart 1- Net Revenue Expenditure ( ) is a net income.

## Where the money came from

Pie chart 2 shows the income from grants and Council Tax as a percentage of the total - see (2) in table 1.

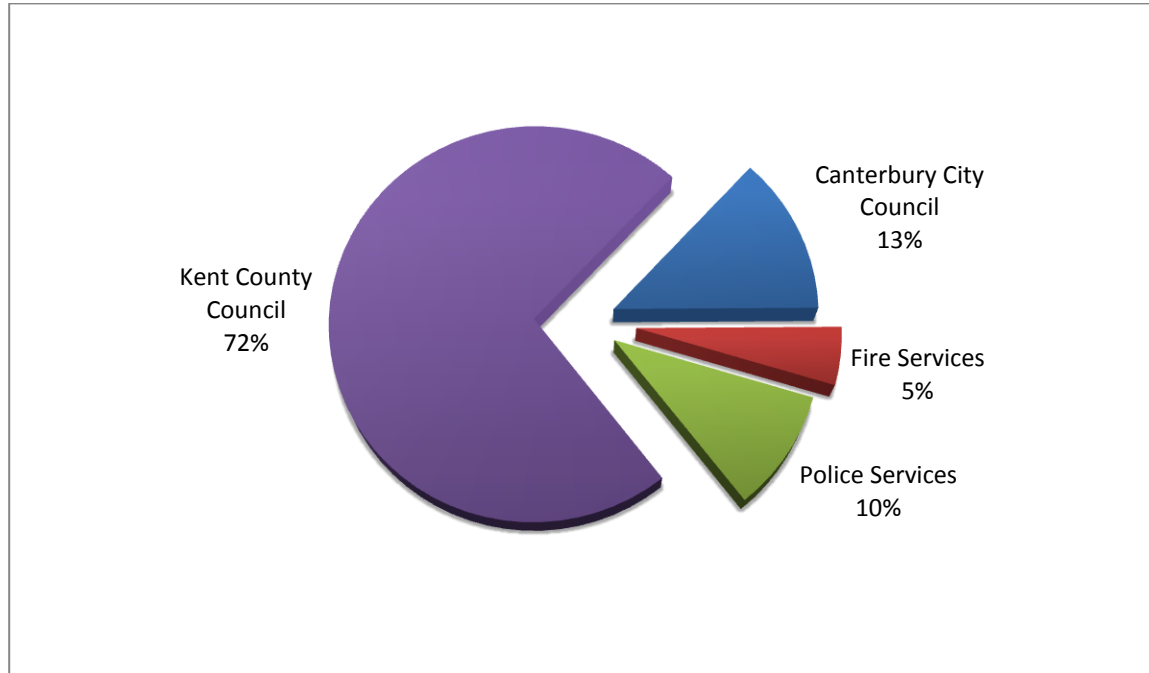


Pie chart 2 – Income sources

- The Revenue Support Grant (RSG) is money paid directly to us from central government.
- Non-domestic rates are paid by businesses in the Canterbury district.
- The Council Tax income is the proportion we keep from the total we collect.
- The New Homes Bonus is a grant paid by government for new homes and empty properties brought back into use.

### Where does the rest of your Council Tax go?

We hold the Council Tax in a separate fund because it is collected on behalf of Kent County Council, the police and the fire service as well as to help pay for our own services. Pie chart 3 shows how it is distributed. We only keep 13% per year of what you pay to us.



Pie chart 3 –Council Tax

## The cost of housing services

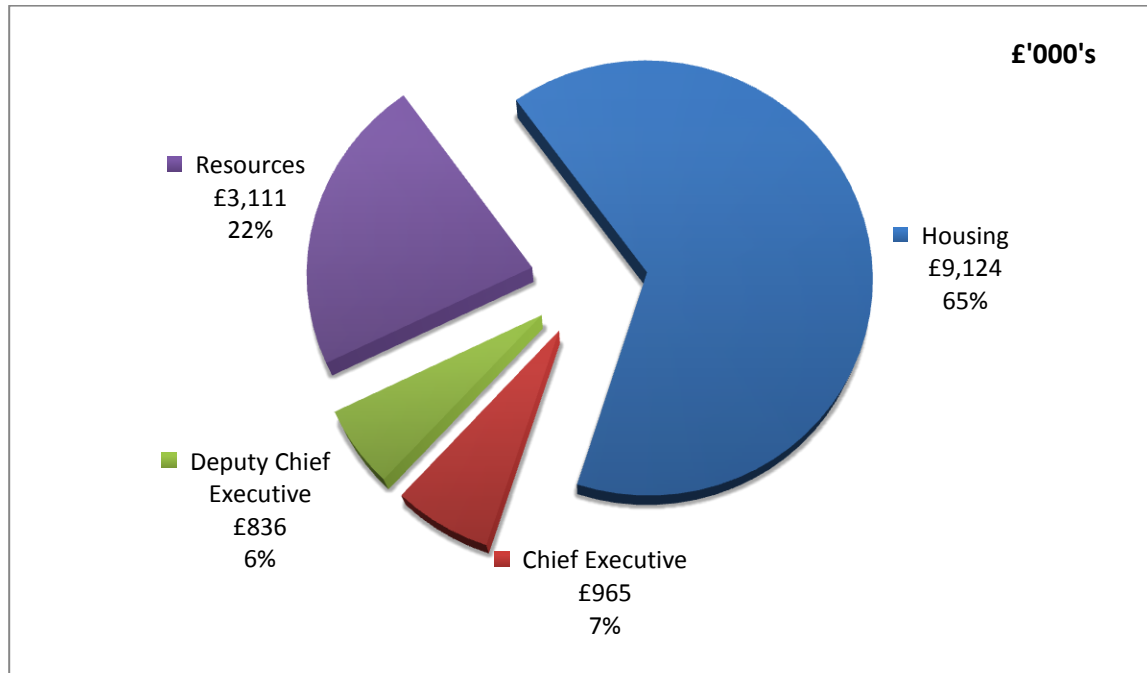
The Housing Revenue Account (HRA) is a separately maintained account showing the cost of running the council's housing stock, used to accommodate council tenants. It is separately financed by rents and service charges. We currently have 5,165 council properties in the Canterbury district.

Table 2 – HRA income & Expenditure

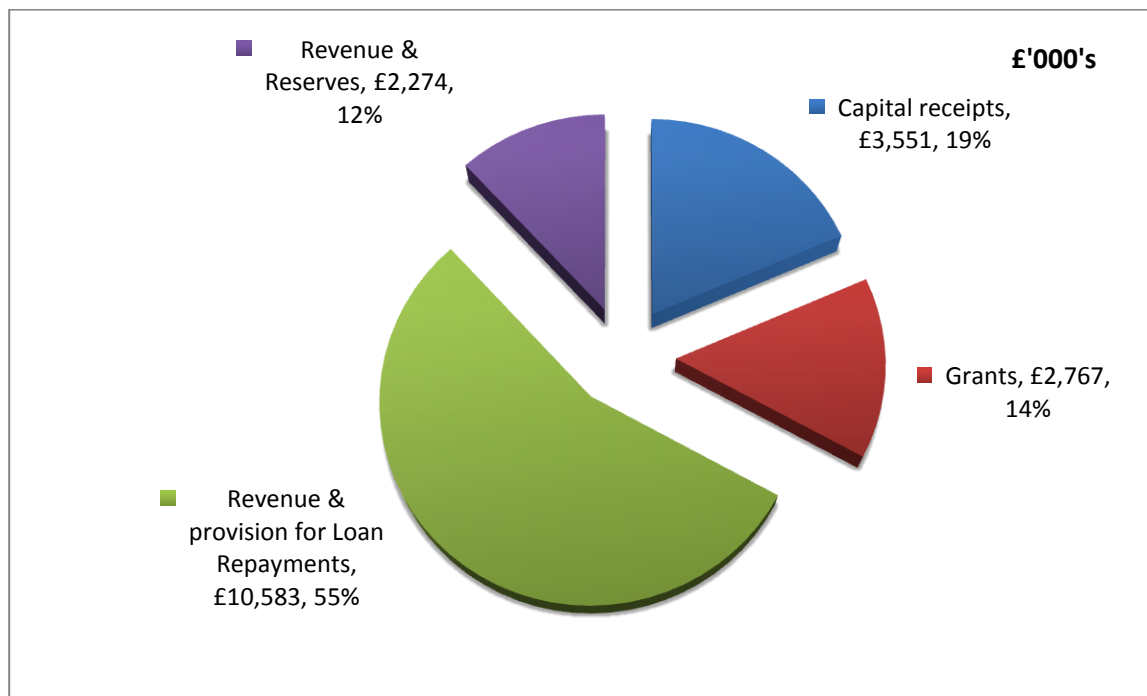
<b>Income</b>	<b>£'000</b>
Rents from homes	(23,857)
Rents for garages	(540)
Charges for services and facilities	(1,611)
<b>Total income</b>	<b>(26,009)</b>
<b>Expenditure</b>	
Repairs and maintenance	6,137
Supervision and management	5,915
Rents, rates, council tax and insurance	312
Depreciation	3,511
Reduction in value of houses (impairment losses)	8,232
Debt Management Costs	39
Increase in provision for bad debts	49
<b>Total expenditure</b>	<b>24,196</b>
<b>Net profit</b>	<b>(1,813)</b>
Corporate costs	121
Plus investments, interest and borrowing	755
<b>Total surplus for the year</b>	<b>(936)</b>
Plus other statutory amounts etc	4,656
Plus reversal of payment to Government re council housing	4,359
Less reversal of impairment losses	(8,232)
<b>Leaving an increase in the HRA balance this year of</b>	<b>(133)</b>
<b>HRA balance at 1 April 2015</b>	<b>(6,594)</b>
<b>HRA balance at 31 March 2016</b>	<b>(6,727)</b>

## Capital spending

This is the money spent on buying, upgrading and improving the council's assets. It isn't included in the other annual income and expenditure tables because we receive the benefit of this spending over many years, not just in the year we spend the money. The breakdown of spending by department and how we paid for it are shown in pie charts 4 and 5.



Pie chart 4 – Capital expenditure



Pie chart 5- Capital Financing

## Balance sheet - what the council owns, what it owes and what it is owed

Table 3

	£'000
<b>At 31 March 2016</b>	
Value of building, land and other owned assets	498,763
Investments and cash in bank	35,817
Money owed <b>to</b> us	11,004
	<b>545,584</b>
<b>less</b>	
Money owed <b>by</b> us	(22,899)
Loans outstanding	(109,146)
Other long-term liabilities	(83,393)
	<b>(215,439)</b>
<b>Total assets less total liabilities</b>	<b>330,145</b>
<b>Financed by</b>	
General Fund balance (table 1)	4,460
HRA balance (table 2)	6,727
Reserves	22,888
Capital financing reserves	296,071
<b>Total</b>	<b>330,145</b>

### Audit approval

Our accounts are audited each year by auditors appointed by the Public Sector Audit Appointments Limited (PSAA). This ensures our financial statements show the council's financial position and income and expenditure accurately and fairly. The auditors delivered their [opinion](#) on our accounts for 2015/16 on 26<sup>th</sup> September 2016.

### Would you like to?

- See this document in large print, Braille audio tape or another language? Please call 01227 862000
- See the full statement of accounts? Go to [www.canterbury.gov.uk/finance](http://www.canterbury.gov.uk/finance) or call 01227 862000
- Comment on this summary... was it easy to read and understand? Was it helpful? Was there anything else you would like to see included? Please call 01227 862000 or go to [www.canterbury.gov.uk/comments](http://www.canterbury.gov.uk/comments)