

# Bridge Neighbourhood Plan Information Statement

## 1. About this statement

A referendum on the Bridge Neighbourhood Plan will be held on Thursday 28 March 2024. This statement provides information on the referendum and the neighbourhood plan it relates to.

## 2. Referendum on the Bridge Neighbourhood Plan

A referendum asks you to vote 'yes' or 'no' to a question. For this referendum you will receive a ballot paper which asks the following question:

Do you want Canterbury City Council to use the Neighbourhood Plan for Bridge to help it decide planning applications in the neighbourhood area?

## 3. What is a neighbourhood area?

The neighbourhood area for Bridge is identified on the map which is included at the end of this Information Statement. The boundary of the neighbourhood area was approved by Canterbury City Council on 17 April 2019 and covers the parish of Bridge.

The referendum area is identical to the area which has been designated as the Bridge Neighbourhood Area. A planning inspector, also known as the Independent Examiner, recommended the plan proceed to a referendum based on the Bridge Neighbourhood Area.

## 4. Am I entitled to vote in the Referendum?

A person is entitled to vote in the referendum if, on Thursday 28 March 2024:

- they are registered to vote in a local government election in the referendum area and are 18 years or over on Thursday 28 March 2024.
- their qualifying address for the referendum is in the Bridge Parish area. A person's qualifying address is, in relation to a person registered in the register of electors, the address in respect of which they are entitled to be registered.

If you are not already registered to vote, the deadline for registering is Tuesday 12 March 2024.

You can check if you are registered by calling our helpline on 01227 862007.

If you need to register, you can do so at [www.gov.uk/register-to-vote](https://www.gov.uk/register-to-vote) or call our helpline on 01227 862007. You will need your national insurance number to hand.

The referendum will be conducted based in accordance with procedures similar to those used at local government elections.

## **5. How do I vote in the referendum?**

You will be given a ballot paper at the polling station, and you can vote by putting a cross (X) in the 'Yes' or 'No' box on your ballot paper. You will only be allowed to put a cross in one box or your vote will not be counted.

If more than 50% of individuals vote 'yes' in the referendum, then Canterbury City Council will 'make' the Bridge Neighbourhood Plan. If the Neighbourhood Plan is 'made' it will form part of the statutory development plan for Canterbury City Council and help determine planning applications in the Bridge Neighbourhood Area.

If more than 50% of individuals vote 'no' then the Bridge Neighbourhood Plan will not be made part of the statutory development plan for Canterbury City Council.

## **6. What are the referendum documents and where can you view them?**

A number of documents are available to view as part of the referendum. These are listed below:

- the referendum version of the Bridge Neighbourhood Plan.
- the Independent Examiner's report on the Bridge Plan.
- representations submitted to the Independent Examiner.
- a Decision Statement which confirms the Bridge Neighbourhood Plan meets the basic conditions and other legislative requirements.
- a statement setting out general information in respect of town and country planning (including neighbourhood planning).

These documents can be accessed on our website at:

[www.canterbury.gov.uk/neighbourhoodplanning](http://www.canterbury.gov.uk/neighbourhoodplanning)

Hard copies of the documents and this Information Statement will be available for inspection at:

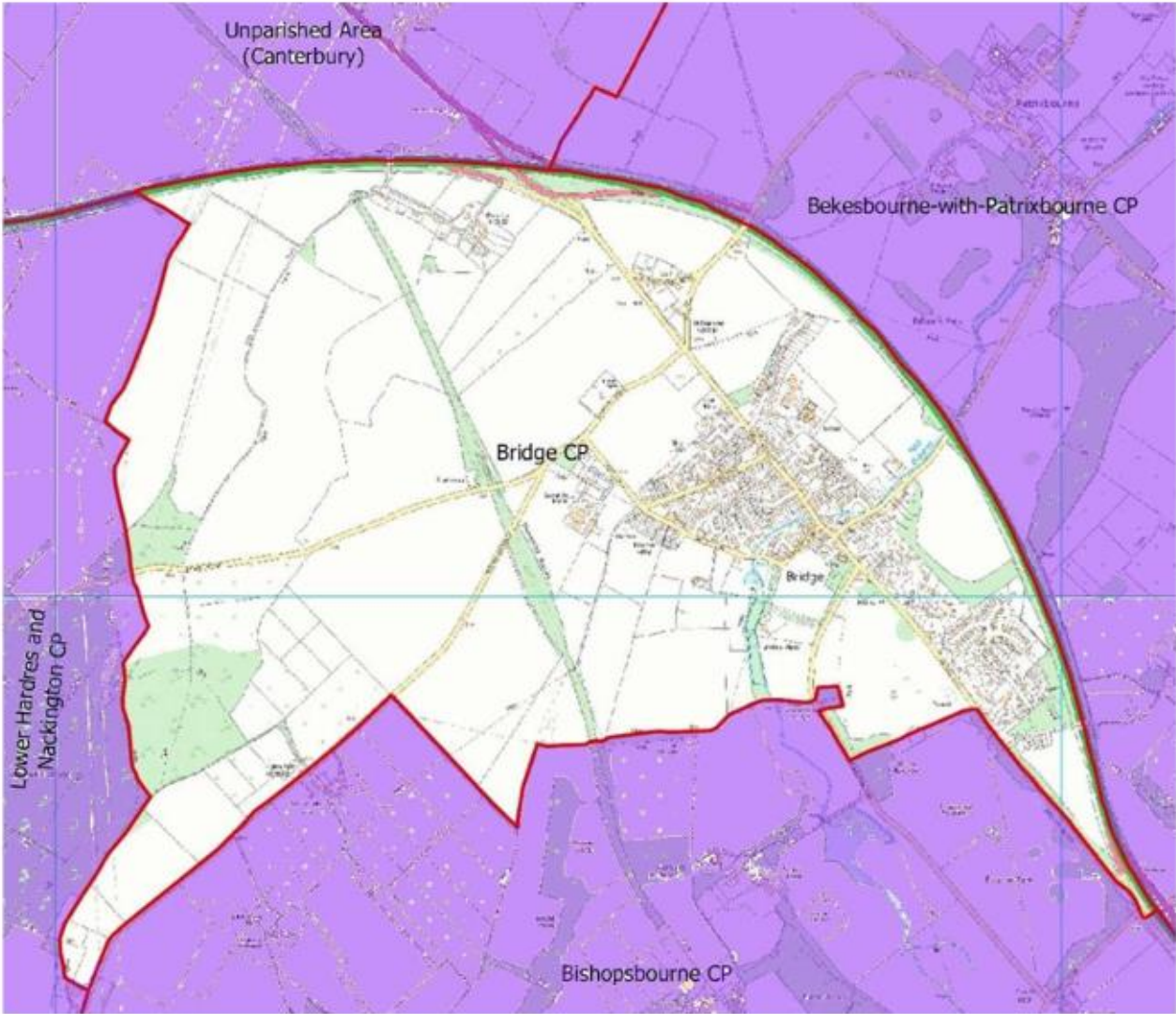
- Canterbury City Council, Military Road, Canterbury, Kent, CT1 1YW (open Monday, Tuesday and Thursday from 10am to 2pm. Closed Wednesdays and Fridays). Call 01227 862 000
- St Peter's Church (foyer), High St, Bridge, Canterbury CT4 5AR (open daily from 9.30am to 4pm). Call 07733 759 195

### 7. Referendum expenses

Expenses can be incurred by an individual or body during the period of the referendum for referendum purposes.

The referendum expenses limit that will apply (as of 1 February 2024) in relation to this referendum is £2435.69. The number of persons entitled to vote in the referendum by reference to which the limit has been calculated is 1249.

### 8. Referendum area



(Base OS map © Crown copyright under license)