

## Canterbury City Council: Summary of Accounts for year ending 31 March 2017

Our accounts show you how we are managing the money we receive to provide services to residents and visitors and to look after our environment. The [Statement of Accounts](#) has been prepared using proper accounting practice. The style and content can be difficult to follow if you are not an accountant. This summary gives the key information in a simpler and more meaningful way and some modifications have been made in order to do this. Our accounts are audited each year by auditors appointed by the Public Sector Audit Appointments Limited (PSAA). This ensures our financial statements show the council's financial position and income and expenditure accurately and fairly. The auditors delivered their opinion on our accounts for on 26<sup>th</sup> September 2017.

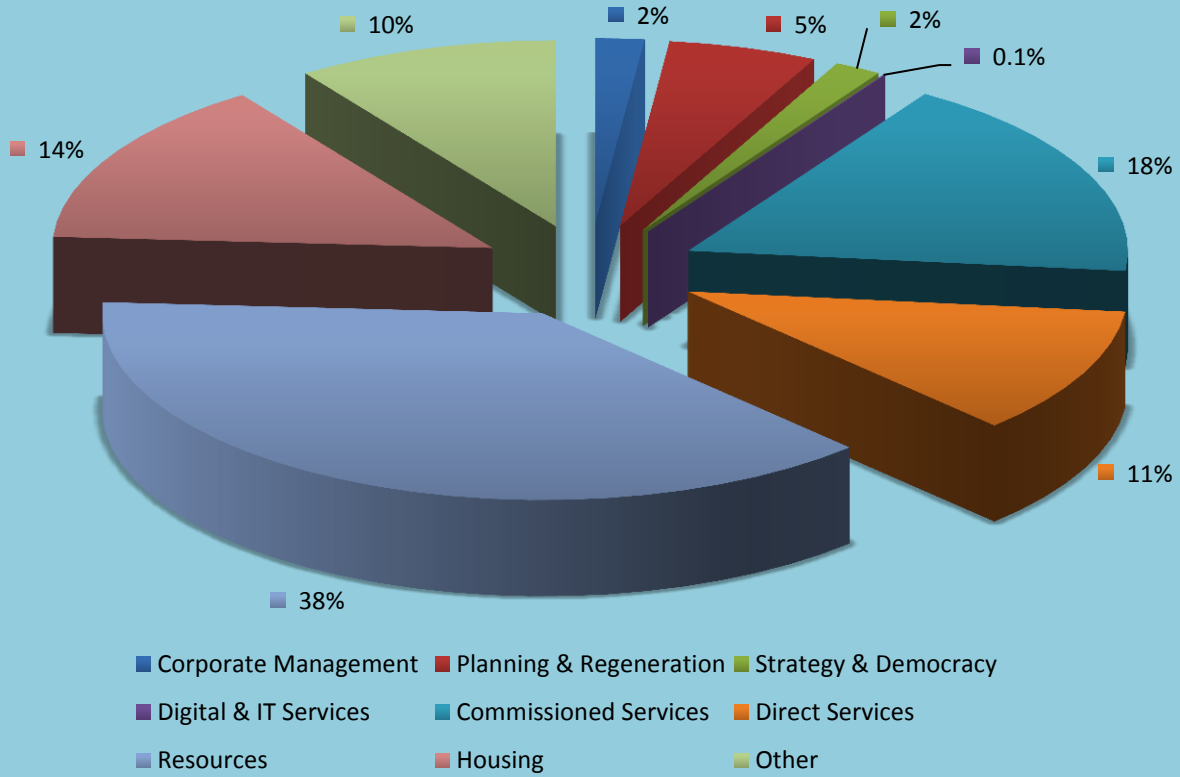
### Income and expenditure

Our Revenue Account shows the cost of services for the year and where the money came from to pay for them. Income is denoted in brackets ().

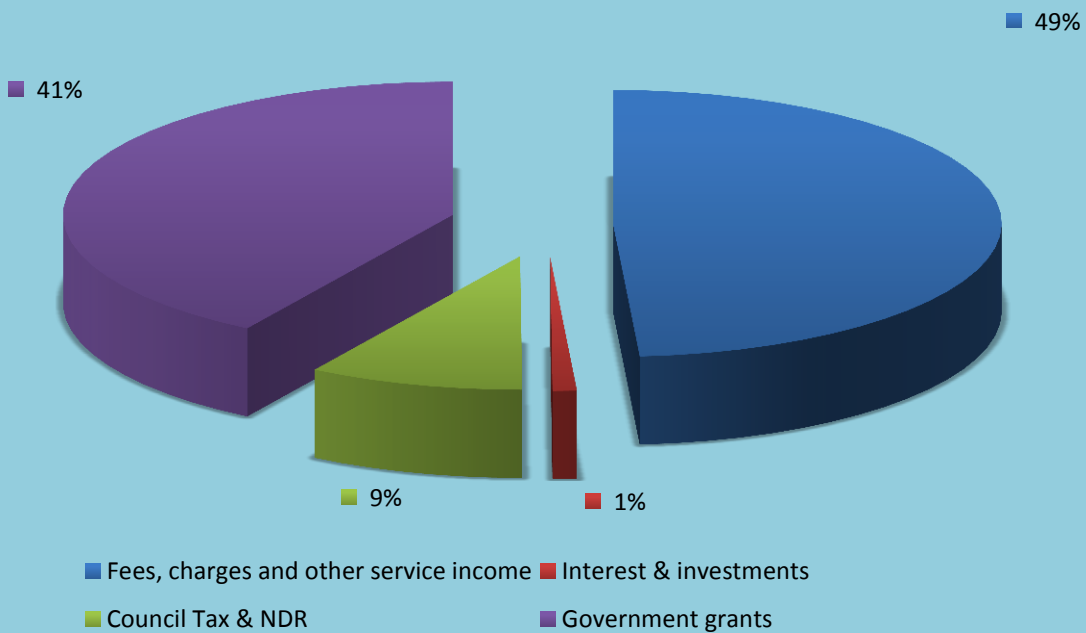
<b>Revenue Account</b>	<b>Gross expenditure £'000</b>	<b>Gross income £'000</b>	<b>Net expenditure £'000</b>
Corporate Management	2,535	(665)	1,870
Planning & Regeneration	7,702	(3,200)	4,502
Strategy & Democracy	2,421	(587)	1,834
Digital & IT Services	74	(38)	36
Commissioned Services	24,822	(14,063)	10,759
Direct Services	15,492	(15,398)	94
Resources	53,692	(56,156)	(2,465)
Housing	20,227	(26,097)	(5,870)
<b>Total Cost of services</b>	<b>126,964</b>	<b>(116,204)</b>	<b>10,760</b>
Other Operating Expenditure	1,323	(3,550)	(2,227)
Investment income and expenditure	7,927	(4,308)	3,619
Capital Grants and Contributions	2,657	(1,063)	1,594
Council Tax	1,650	(13,464)	(11,814)
Government grants	0	(9,598)	(9,598)
<b>Total Expenditure</b>	<b>140,521</b>	<b>(148,186)</b>	<b>(7,666)</b>
<b>Surplus for the year</b>			<b>(7,666)</b>

GF share of surplus on provision of services		(2,722)	
Statutory Accounting Adjustments		3,578	
Transfer from reserves		(937)	
<b>Increase in general fund balance for the year</b>		<b>(80)</b>	
General fund balance at 31 March 2016	(4,460)		
General fund balance at 31 March 2017	(4,540)		
<b>Increase in general fund balance for the year</b>	<b>(80)</b>		

## Gross Expenditure (£140m)



## Gross Income (£148m)



## The cost of housing services

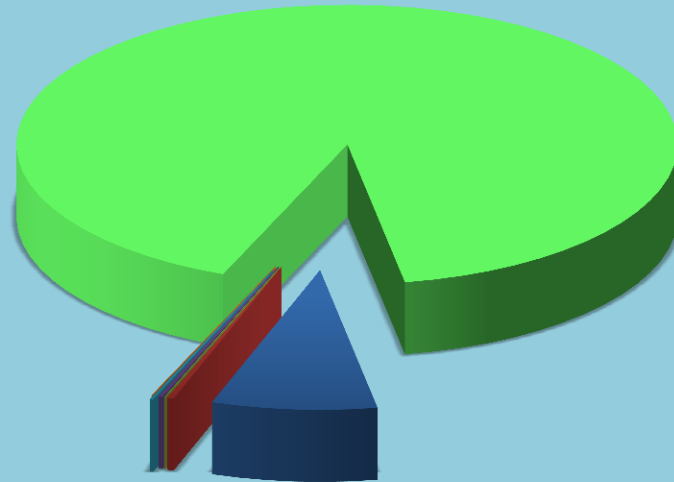
The Housing Revenue Account (HRA) is a separately maintained account showing the cost of running the council's housing stock, used to accommodate council tenants. It is separately financed by rents and service charges. We currently have 5,155 council properties in the Canterbury district.

<b>Housing Revenue Account</b>		<b>£'000</b>
<b>Income</b>		
Rents from homes		(23,723)
Rents for garages		(578)
Charges for services and facilities		(1,684)
Contributions towards expenditure		(112)
<b>Total income</b>		<b>(26,097)</b>
<b>Expenditure</b>		
Repairs and maintenance		5,892
Supervision and management		6,129
Rents, rates, council tax and insurance		336
Depreciation		3,899
Reduction in value of houses (impairment losses)		3,871
Debt Management Costs		24
Increase in provision for bad debts		78
<b>Total expenditure</b>		<b>20,228</b>
		<b>(5,869)</b>
<b>Net profit</b>		
Plus corporate costs		121
Plus investments, interest and borrowing		807
<b>Total surplus for the year</b>		<b>(4,940)</b>
Plus other statutory amounts etc		(2,000)
Less reversal of payment to Government re council housing		4,580
Plus reversal of impairment losses		(3,866)
<b>Leaving an increase in the HRA balance this year of</b>		<b>(6,226)</b>
HRA balance at 1 April 2016		(6,727)
HRA balance at 31 March 2017		(12,953)

## Capital spending

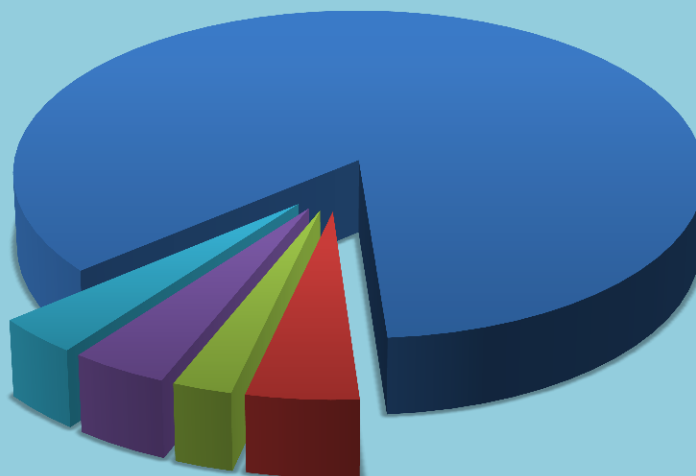
This is the money spent on buying, upgrading and improving the council's assets. It isn't included in the other annual income and expenditure tables because we receive the benefit of this spending over many years, not just in the year we spend the money. The breakdown of spending by department and how we paid for it are shown in charts below. The main expenditure in 2016/17 was the purchase of a 50% stake in the Whitefriars shopping centre.

## Capital Expenditure (£87m)



- Housing Capital
- Planning and Regeneration
- Strategy and Democracy
- Commissioned Services
- Deputy Chief Executive
- Direct Services
- Resources Department

## Capital Financing



- Borrowing
- Capital receipts
- Grants
- Revenue and provision for repayment of loans
- Revenue & reserves

## Balance sheet - what the council owns, what it owes and what it is owed

<b>Balance Sheet</b>	<b>£'000</b>
Value of building, land other owned assets	623,148
Investments and cash in bank	45,041
Money owed to us	11,972
	<b>680,161</b>
<i>less</i>	
Money owed by us	(26,923)
Loans outstanding	(182,160)
Other long-term liabilities	(87,015)
	<b>(296,098)</b>
<b>Total assets less total liabilities</b>	<b>384,063</b>
General Fund balance	4,540
HRA balance	12,953
Reserves	22,612
Capital financing reserves	343,958
<b>Total</b>	<b>384,063</b>

## Where does your Council Tax go?

