

Summary of Accounts for year ending 31 March 2019

Our accounts show you how we are managing the money we receive to provide services to residents and visitors and to look after our environment. The [Statement of Accounts](#) has been prepared using proper accounting practice. The style and content can be difficult to follow if you are not an accountant. This summary gives the key information in a simpler and more meaningful way and some modifications have been made in order to do this. Our accounts are audited each year by auditors appointed by the Public Sector Audit Appointments Limited (PSAA). This ensures our financial statements show the council's financial position and income and expenditure accurately and fairly.

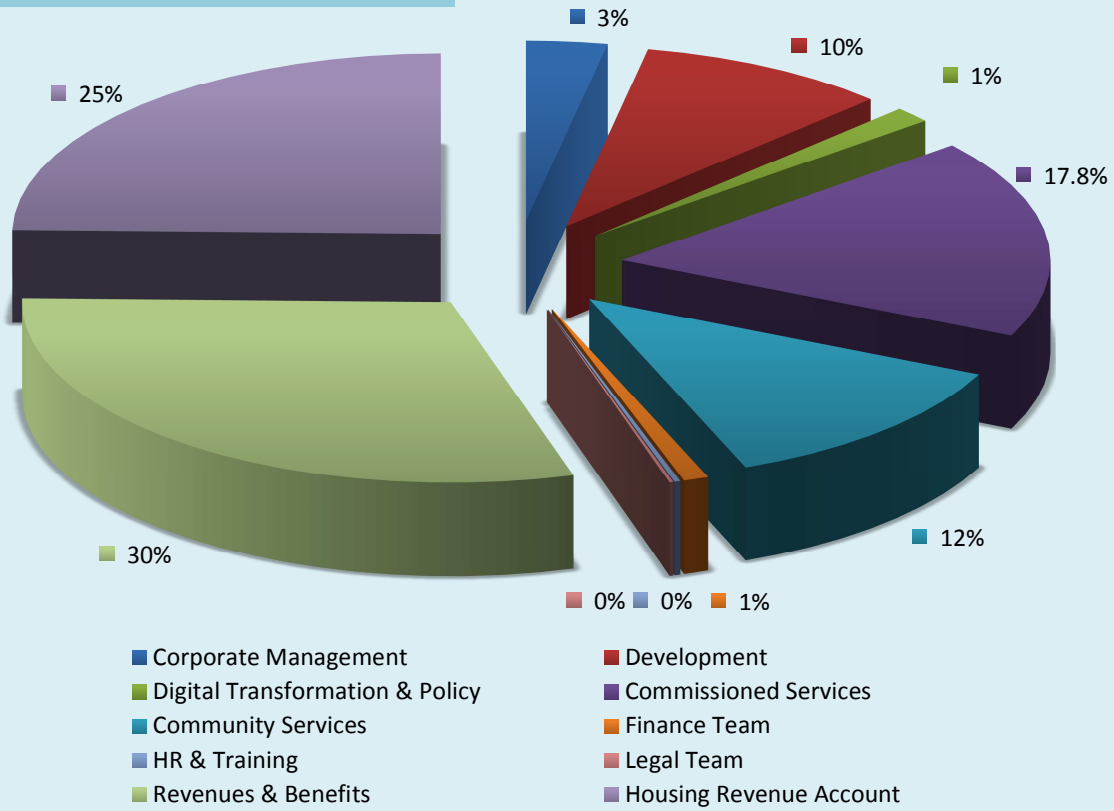
Income and expenditure

Our Revenue Account shows the cost of services for the year and where the money came from to pay for them. Income is denoted in brackets ().

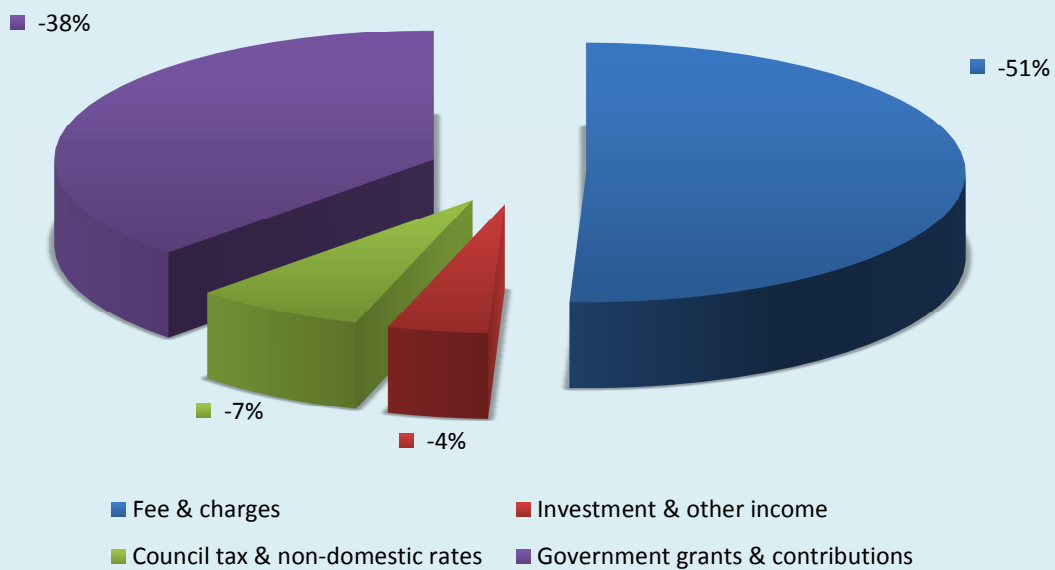
Revenue Account	Gross expenditure £'000	Gross income £'000	Net expenditure £'000
Corporate Management	4,546	(6,981)	(2,435)
Development	14,136	(17,190)	(3,054)
Digital Transformation & Policy	2,117	(345)	1,773
Commissioned Services	26,490	(13,050)	13,440
Community Services	18,103	(16,624)	1,479
Finance Team	1,407	(332)	1,075
HR & Training	335	(88)	247
Legal Team	214	(281)	(68)
Revenues & Benefits	44,462	(43,634)	828
Housing Revenue Account	36,601	(25,315)	11,285
Total Cost of services	148,410	(123,840)	24,569
Other Operating Expenditure	1,390	(2,915)	(1,525)
Financing & Investment Income & Expenditure	8,675	(861)	7,814
Capital Grants and Contributions	585	(4,074)	(3,489)
Council Tax	31	(11,269)	(11,238)
Government grants	27	(10,132)	(10,105)
Total Expenditure	159,118	(153,092)	6,026
Deficit for the year			6,026

GF share of surplus on provision of services		(5145)
Statutory Accounting Adjustments		5,643
Transfer from reserves		(309)
Increase in general fund balance for the year		188
General fund balance at 31 March 2018	(4,380)	
General fund balance at 31 March 2019	(4,192)	
Increase in general fund balance for the year	188	

Gross Expenditure (£148m)



Gross Income (£153m)



The cost of housing services

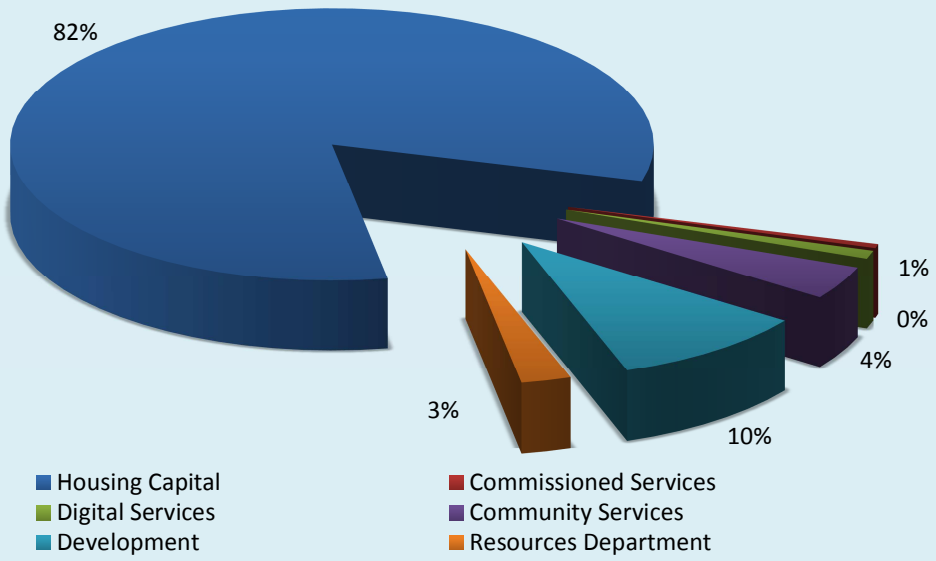
The Housing Revenue Account (HRA) is a separately maintained account showing the cost of running the council's housing stock, used to accommodate council tenants. It is separately financed by rents and service charges. We currently have 5,093 council properties in the Canterbury district.

Housing Revenue Account		£'000
Income		
Rents from homes		(23,093)
Rents for garages		(660)
Charges for services and facilities		(1,545)
Revaluation of plant, property & equipment note 7		(18)
Total income		(25,315)
Expenditure		
Repairs and maintenance		6,462
Supervision and management		5,926
Rents, rates, council tax and insurance		415
Depreciation		4,002
Reduction in value of houses (impairment losses)		19,771
Debt Management Costs		25
Increase in provision for bad debts		0
Total expenditure		36,601
Net profit		11,285
Plus corporate costs		121
Plus investments, interest and borrowing		(236)
Total surplus for the year		11,171
Plus other statutory amounts etc		12,528
Less reversal of payment to Government re council housing		4,852
Plus reversal of impairment losses		(19,753)
Leaving an decrease in the HRA balance this year of		8,797
HRA balance at 1 April 2018		(12,975)
HRA balance at 31 March 2019		(4,177)

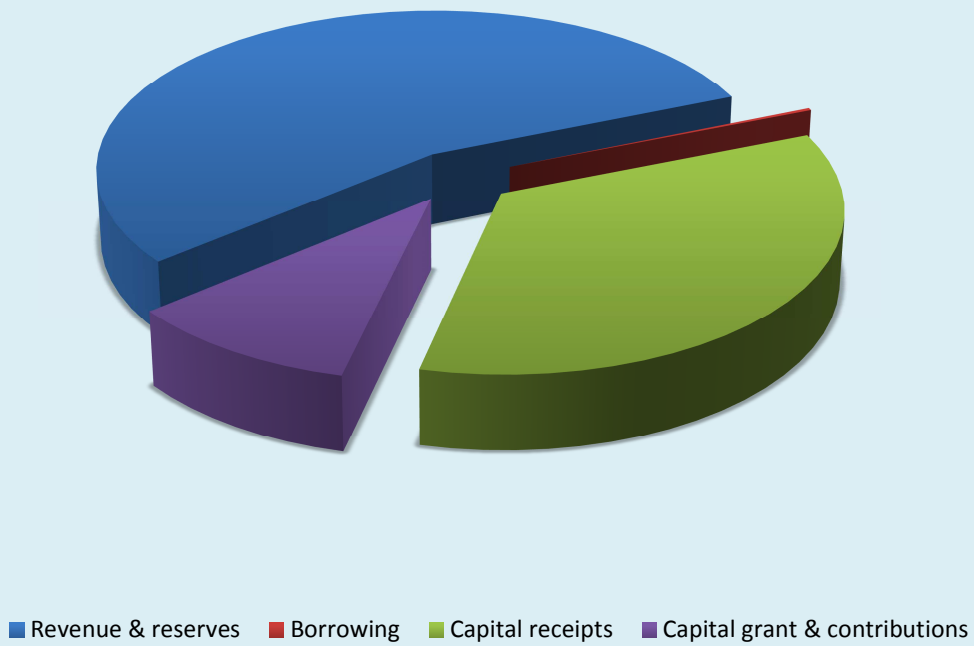
Capital spending

This is the money spent on buying, upgrading and improving the council's assets. It isn't included in the other annual income and expenditure tables because we receive the benefit of this spending over many years, not just in the year we spend the money. The breakdown of spending by department and how we paid for it are shown in charts below.

Capital Expenditure (£31m)



Capital Financing



Balance sheet - what the council owns, what it owes and what it is owed

Balance Sheet	£'000
Value of building, land other owned assets	716,929
Investments and cash in bank	8,131
Money owed to us	16,045
	741,105
<i>less</i>	
Money owed by us	(26,472)
Loans outstanding	(217,088)
Other long-term liabilities	(75,931)
	(319,491)
Total assets less total liabilities	421,614
General Fund balance	4,192
HRA balance	4,177
Reserves	19,565
Capital financing reserves	393,681
Total	421,614

Where does your Council Tax go?

