

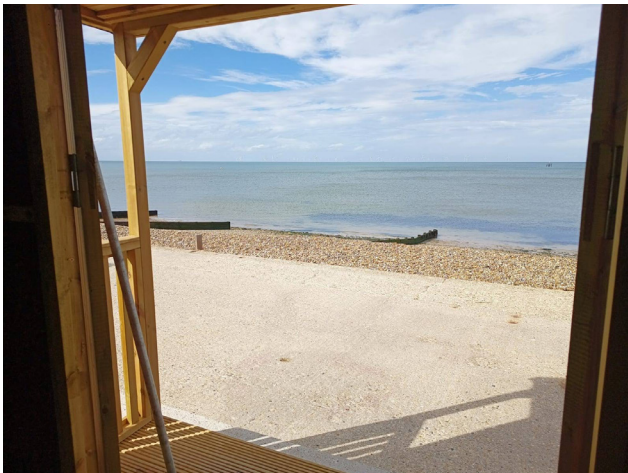
# Beach huts for sale

Herne Bay



# East Cliff, Herne Bay

OIE of £28,000 including VAT



## Property Information

Twenty seven brand new huts located on the promenade at East Cliff, Herne Bay. Stunning, uninterrupted view across the bay in a quiet location.

## Beach Hut Construction

- Overall hut size: 2.4m x 2.9m
- Apex height: 2.960m, Eaves 1.9m, pitch 33°
- Pressure treated softwood tongue and groove floor
- 18mm External grade plywood roofing
- 34mm x 45mm treated softwood framing
- Cladding: 25mm x 200mm treated shiplap cladding, Tyvec lining
- Verandah: 700mm x 2400mm decked verandah with balustrade to side
- Door: Purpose made framed ledged and braced timber double doors
- 1220mm x 1780mm, to the front of the beach hut
- All timber used is pressure treated with preservative and all cut ends treated prior to construction.

## Security

- Includes three mortice locks, two shoot bolts and heavy duty hinges.
- Galvanised security bar fitted across the front of the beach hut for additional security. The bar is mounted on two galvanised brackets which fit to the hut frame. A second supporting bracket is fitted centrally (to the door).
- The bar is locked in place by a single padlock. Exposed screws are anti-tamper.

**Main services** – N/A

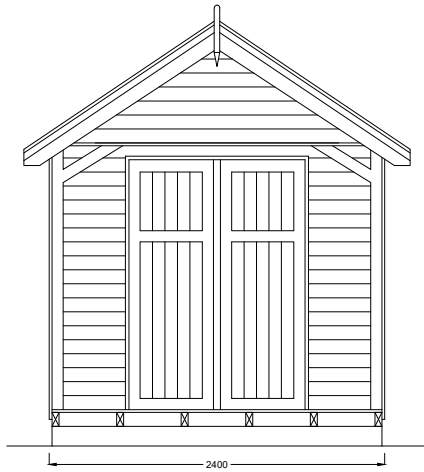
**Heating** – No

**Windows** – No

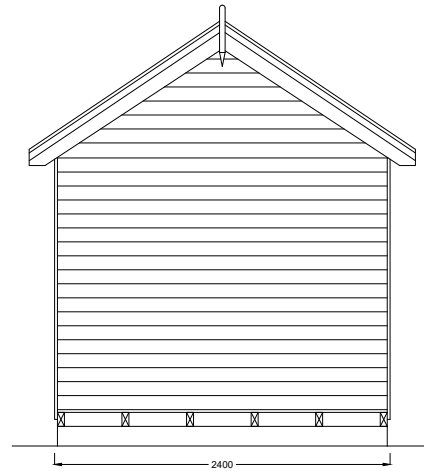
**Adaptation fee applicable** – No

Please email your offer and contact phone number to [beachhuts@canterbury.gov.uk](mailto:beachhuts@canterbury.gov.uk)  
 Payment to be made within seven days of receipt of invoice.

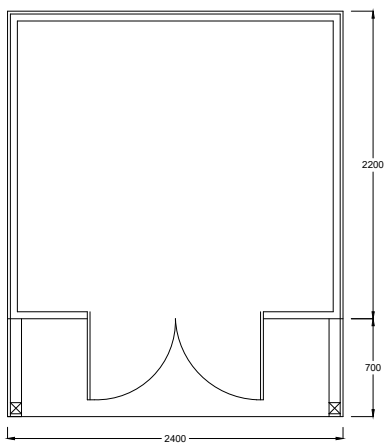




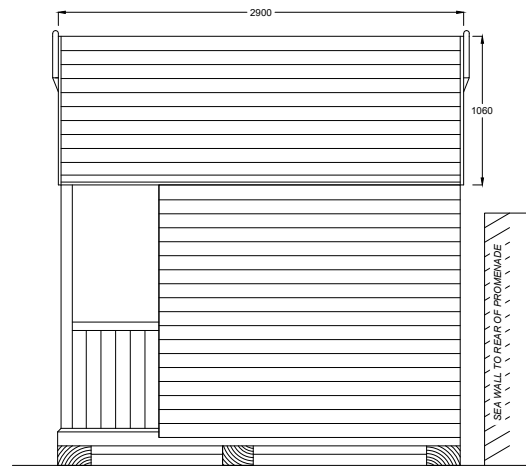
**PROPOSED FRONT ELEVATION**



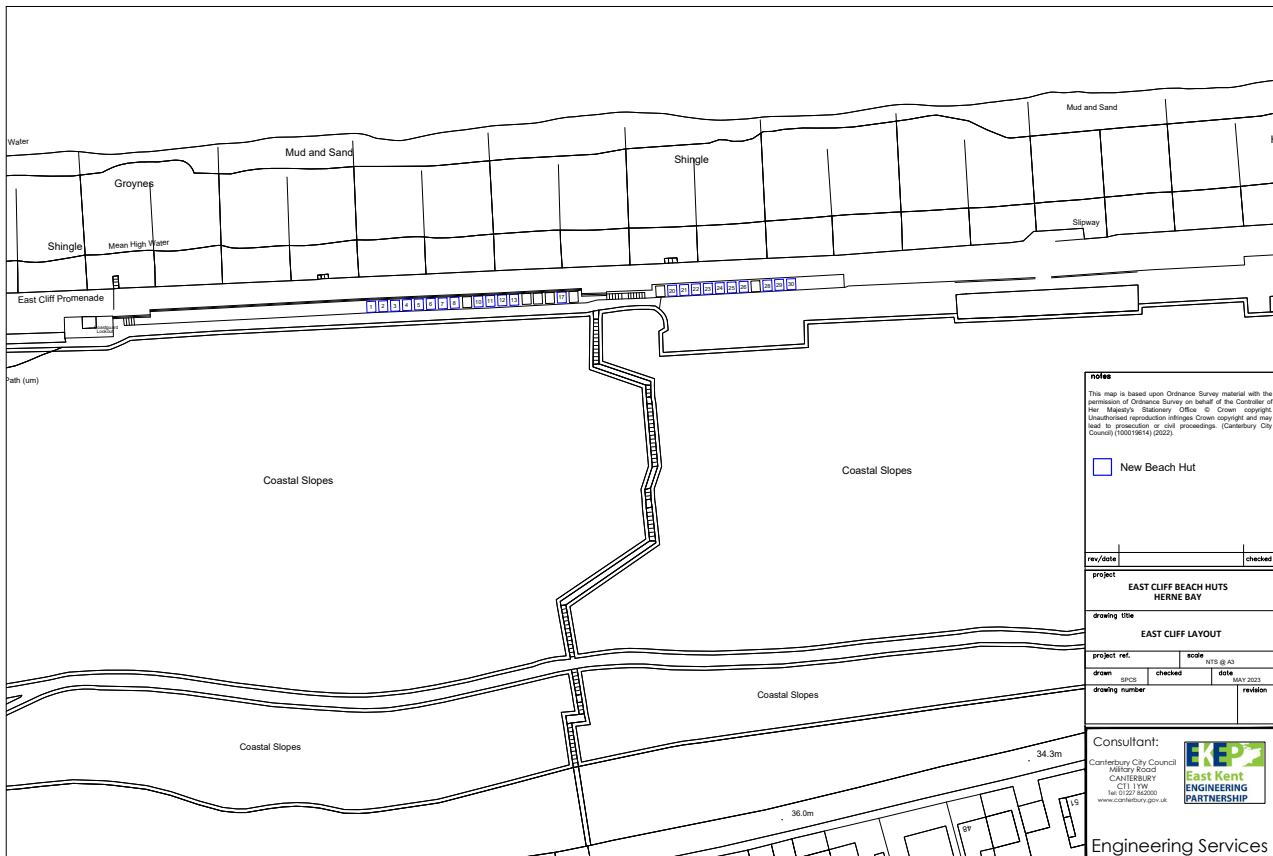
**PROPOSED REAR ELEVATION**



**PROPOSED BEACH HUT PLAN**



**PROPOSED SIDE ELEVATION**



# Herne Bay

Herne Bay has retained an inimitable charm with its Victorian architecture, beautiful floral gardens and promenade running alongside the beach.

If you want traditional seaside fun you will find it here with two miles of splendid seafront offering seaside favourites including cafés, friendly pubs, good old fish and chips and an 18 hole miniature golf course.

On a rainy day you can enjoy indoor swimming with a choice of three pools or take part in a wide range of activities on offer in the newly refurbished sports centre.

To the east is Reculver Country Park with unique views of 12th Century towers and a Roman fort.

You can venture down to the Cultural Trail to discover the statue of Sir Barnes Neville Wallis (designer of the bouncing bomb) and a large mural depicting famous people who have lived in, or been associated with, the town.

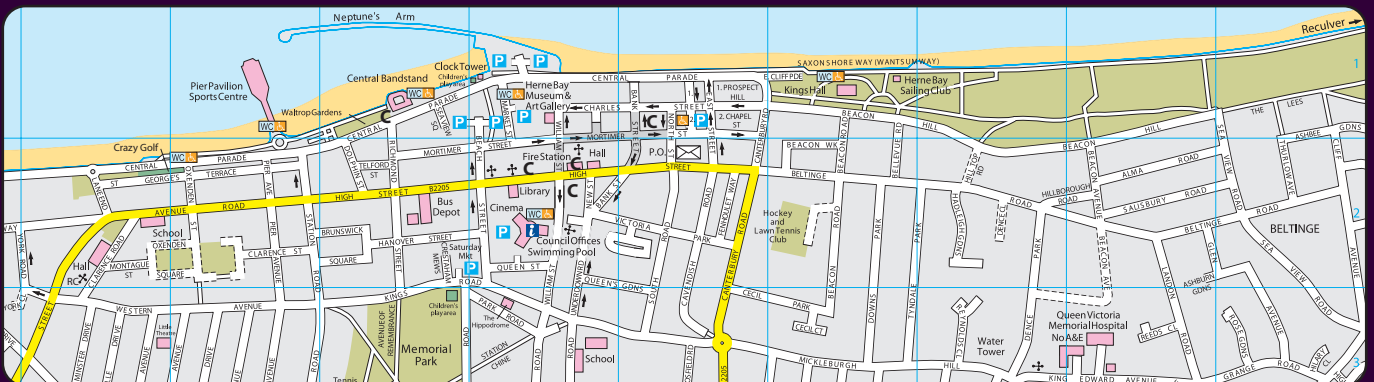
## Herne Bay facilities

- Life guarded swim area (at high season) at the main Central Beach
- Public toilets at The Kings Hall
- Tea room at the King's Hall provides hot and cold drinks, pastries, snacks and of course, delicious ice cream.
- Public rescue equipment along entire bay
- Herne Bay Sailing Club close to beach hut sites
- Hampton Bay Sailing Club
- Herne Bay Amateur Rowing Club
- Heron Angling Association
- Nearby public launch ramps for watercraft
- Free parking along coastal road

There is a vibrant beach hut community which is led by the Herne Bay Beach Hut Association.

Membership is open to anyone who owns a beach hut in Herne bay, so if you would like to become a member you can join by visiting their webpage [hernebaybeachhuts.com](http://hernebaybeachhuts.com)

Benefits of joining the association include discount for beach hut insurance and also provides more information regarding hut ownership such as security, maintenance issues and useful contact details.



## Directions to East Cliff, Herne Bay

- Car: Sat Nav grid reference grid reference TR 18884 68452 or postcode CT6 6JN, Beacon Hill
- Road: from the A299/M2 coast road or the A291 from Canterbury. All routes to the seafront are posted from the A299 and A291
- Train: 95 minutes (approximately) from London Victoria, then approximately one mile from Herne Bay train station
- Bus: local bus service with a circular route to Canterbury



## Contact details

Canterbury City Council  
Harbour and Foreshore Services  
West Quay Building  
Whitstable Harbour  
WHITSTABLE CT5 1AB

E-mail: [beachhuts@canterbury.gov.uk](mailto:beachhuts@canterbury.gov.uk)  
[canterbury.gov.uk/coast](https://www.canterbury.gov.uk/coast)

Updated: September 2024