

Beach huts for sale

Whitstable and Herne Bay



Tankerton East

TE154

£50,000



Property Information

Great opportunity to purchase an extended beach hut located on the back row on Tankerton Slopes. Ten minute walk to Tankerton High Street. Fresh drinking water tap located 45m away at the bottom of the footpath. Toilets and cafe two minutes walk away. Free on-street parking available all year round. Easy access from London St Pancras/London Bridge via rail to Whitstable or by car down the M2 and then five minutes off Thanet Way.

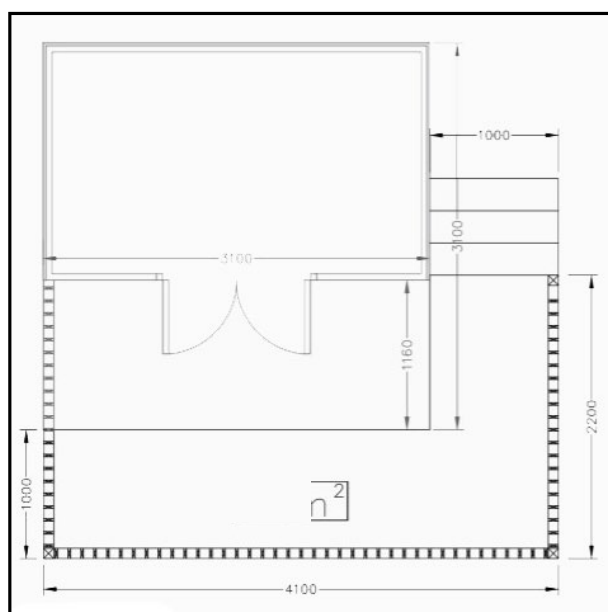
Main services N/A

Heating No

Windows No

Adaptation fee applicable Yes

Hut measurements



Viewing/make offer

Please phone **01227 266 719** or
email **beachhuts@canterbury.gov.uk**

Whitstable

Whitstable is famous for its oysters but is also home to charming cafés, pubs and great restaurants. Despite its popularity, it is still a place where intimacy thrives and where the main streets are full of craft shops, galleries and boutiques that trade alongside delicatessens, butchers and bakers.

With its pebble beach, this unspoilt shoreline takes you back in time and offers a perfect setting to enjoy some stunning sunsets. Additional activities include an indoor swimming pool and gym, sports centre, bowling and laser games.

There is the Whitstable Castle and gardens that date back to the 1730s overlooking the bay. Enjoy a homemade menu available at the Orangery Tea Room, take in the view from the castle roof garden and play in the pirate themed area for children.

Tankerton Bay is an award winning beach with large areas of open space known locally as 'The Slopes'. There are presently 378 beach huts located between four areas known as Tankerton West, Tankerton East, Marine Crescent and Long Rock.

Facilities in the Tankerton Bay area

- Life guarded swim area (lifeguards present at high season)
- Public toilets
- Stand pipes and beach showers
- Public rescue equipment along entire bay
- Tankerton Bay Sailing Club
- Recreational facilities
- Whitstable town centre
- Free parking along coastal road

There is a vibrant beach hut community which is led by the Tankerton Bay Beach Hut Association

Membership is open to anyone who owns a beach hut in Tankerton, so if you would like to become a member you can join by visiting their webpage **www.tankertonbeachhuts.co.uk**

Benefits of joining the association include discount for beach hut insurance and membership of the Beach Hut Watch scheme. The association also provides more information regarding hut ownership such as security, maintenance issues and useful contact details.

Herne Bay

Herne Bay has retained an inimitable charm with its Victorian architecture, beautiful floral gardens and promenade running alongside the beach.

If you want traditional seaside fun you will find it here with two miles of splendid seafront offering seaside favourites including cafés, friendly pubs, good old fish and chips and an 18 hole miniature golf course.

On a rainy day you can enjoy indoor swimming with a choice of three pools or take part in a wide range of activities on offer in the newly refurbished sports centre.

To the east is Reculver Country Park with unique views of 12th Century towers and a Roman fort.

You can venture down to the Cultural Trail to discover the statue of Sir Barnes Neville Wallis (designer of the bouncing bomb) and a large mural depicting famous people who have lived in, or been associated with, the town.

Herne Bay facilities

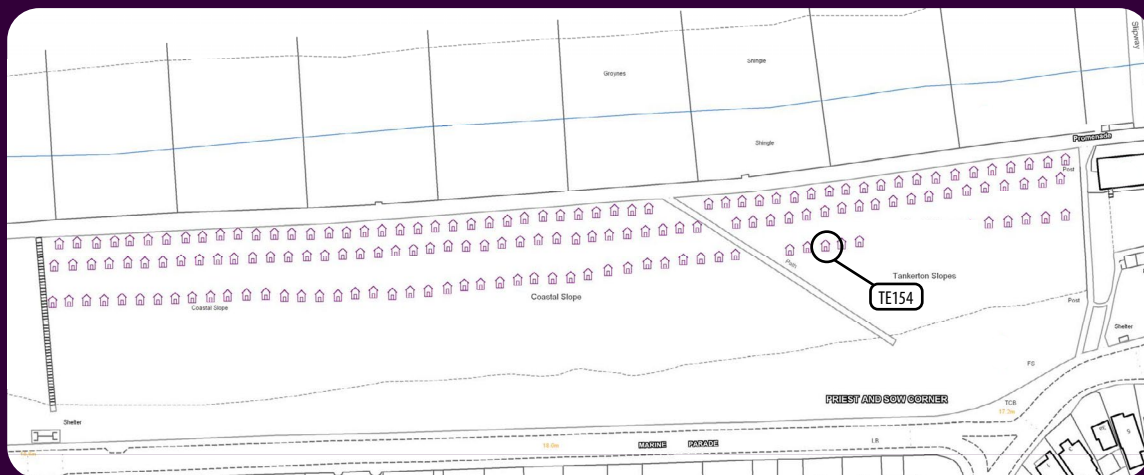
- Life guarded swim area (lifeguards present at high season)
- Public toilets
- Stand pipes and beach showers
- Café
- Restaurant
- Public rescue equipment along entire bay
- Hampton Bay Sailing Club
- Herne Bay Amateur Rowing Club
- Heron Angling Association
- Nearby public launch ramps for watercraft
- Free parking along coastal road
- Parking in Hampton car park

There is a vibrant beach hut community which is led by the Herne Bay Beach Hut Association

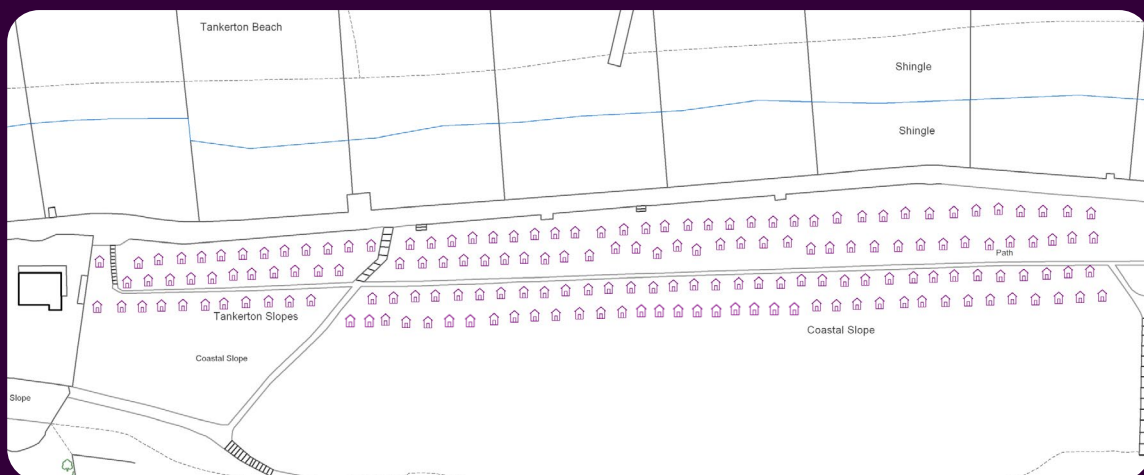
Membership is open to anyone who owns a beach hut in Herne bay, so if you would like to become a member you can join by visiting their webpage **www.hernebaybeachhuts.com**

Benefits of joining the association include discount for beach hut insurance and also provides more information regarding hut ownership such as security, maintenance issues and useful contact details.

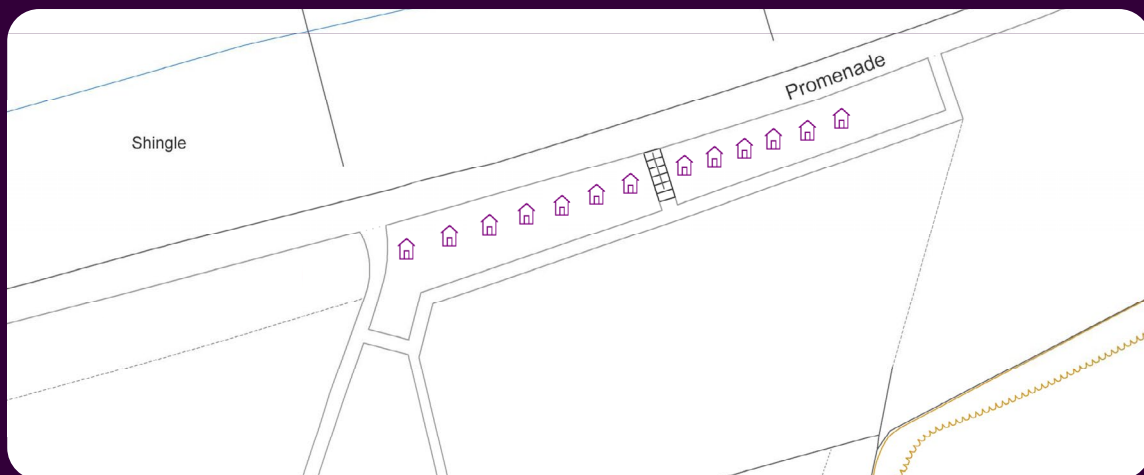
Tankerton East



Tankerton West



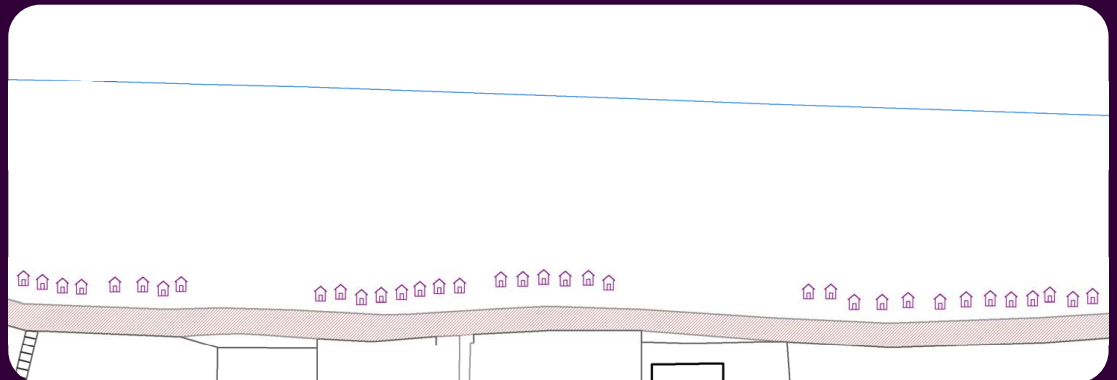
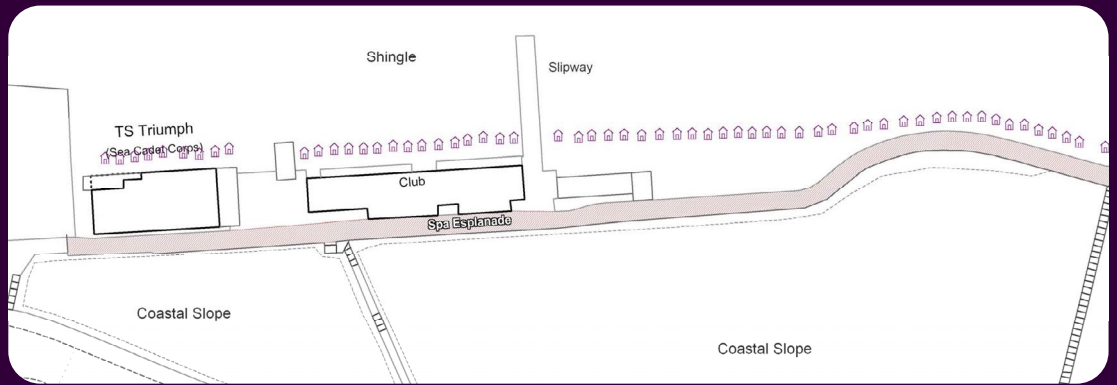
Long Rock



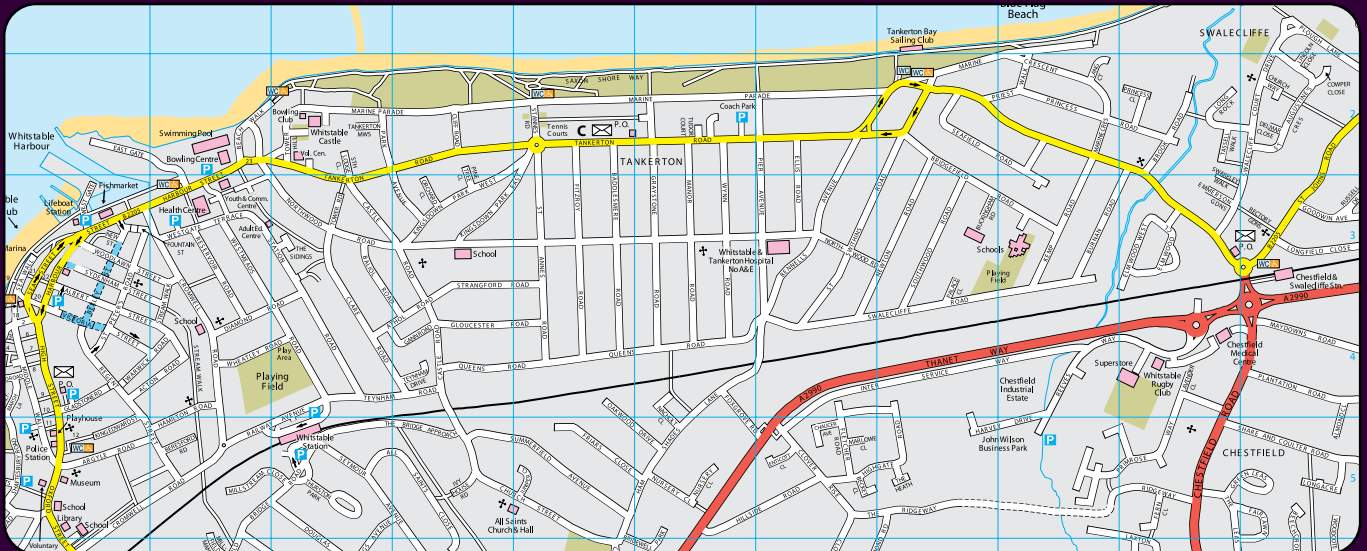
Marine Crescent



West Beach Herne Bay



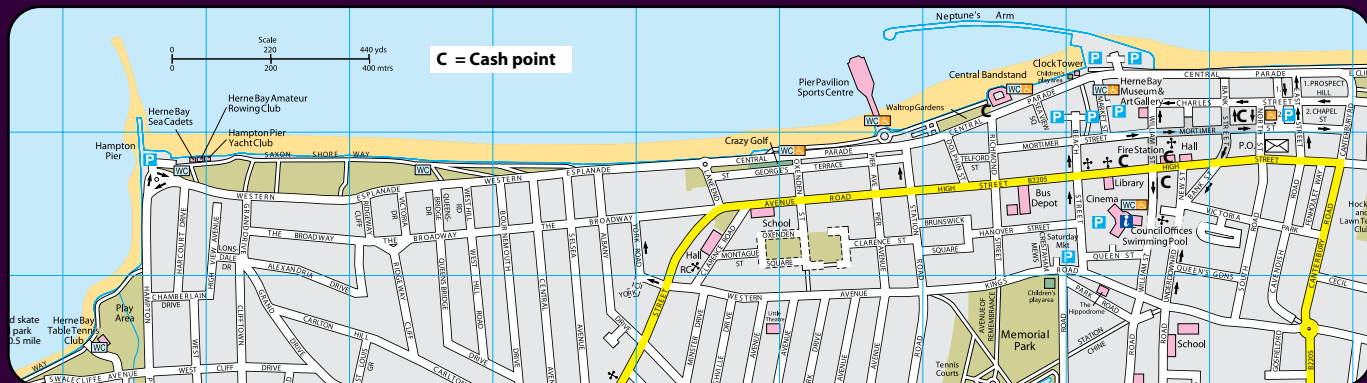
Whitstable



Directions to the Tankerton slopes

- Car: Sat Nav grid reference TR 121676 or postcode CT5 2, Marine Crescent, Whitstable
- Road: from the A299/M2 coast route or the A290 from Canterbury. All routes to the seafront are posted from the A299 and A290
- Train: 90 minutes (approximately) from London Victoria, then it's approximately one and a half miles from Whitstable train station
- Bus: local bus service with a circular route to Canterbury

Herne Bay



Directions to West Beach, Herne Bay

- Car: Sat Nav grid reference TR 175 684 or postcode CT6 8, Western Esplanade
- Road: from the A299/M2 coast route or the A291 from Canterbury. All routes to the seafront are posted from the A299 and A291
- Train: 95 minutes (approximately) from London Victoria, then approximately one mile from Herne Bay train station
- Bus: local bus service with a circular route to Canterbury



Contact details

Harbour and Foreshore Services
West Quay Building
Whitstable Harbour
WHITSTABLE CT5 1AB

Telephone: **01227 266 719**
E-mail: **beachhuts@canterbury.gov.uk**
canterbury.gov.uk/coast