

Tankerton Coastal Park Management Plan

Including the Tankerton Slopes

Site of Special Scientific Interest (SSSI)

2025 to 2032



CONTENTS

General Information.....	4	5. Tankerton Slopes SSSI: Designation, Ecology and Management.....	12
1. Introduction.....	5	5.1 Designation and Statutory Obligation	12
2. Management Plan Aims	6	5.2 Ecology of the Tankerton Slopes SSSI	13
3. Site Description.....	7	5.3 Management for Hog’s Fennel, Fisher’s Estuarine Moth and Agonopterix putridella.	13
3.1 Location	7	6. Coastal Park SWOT Analysis.....	14
3.2 Queen Elizabeth II Diamond Jubilee Field Status	7	6.1 Key Findings	14
3.3 Management Partners	7	6.2 SWOT Analysis	16
3.4 Local Policy Context	8	7. Objectives and Guidance for Management	17
3.6 Document History	8	7.1 SMART Objectives	17
4. Tankerton Coastal Park Landscape Characteristics.....	9	7.2 Review of Tankerton’s Coastal Park Management Plan 2014 to 2024 Actions	18
4.1 A Coastal Landscape	9	7.3 Detailed Summary of Management	19
4.2 Habitats and Species	10	8. Monitoring, Report and Review.....	28
4.3 Access	10	Appendix	

GENERAL INFORMATION

Name:	Tankerton Coastal Park (including Tankerton Slopes SSSI)
District:	Canterbury City Council
Grid Reference:	TR 121 672
Tenure:	Canterbury City Council
Vehicle Access:	Marine Parade/access to promenade via Marine Crescent
Geology/Soils:	London clay and heavy soils with naturally high groundwater
Key features:	Amenity grass, Rough grassland, SSSI and SAC designations, Promenade, Shingle Beach, Sailing Club, Groynes, Beach huts, Sea defences, Skatepark, Sea View Cafe, Public Toilets.
Habitats:	Grassland, Scrub, Shingle beach, Mudflats
Important Species:	Fisher's Estuarine Moth, <i>Gortyna borelii lunata</i> <i>Agonopterix putridella</i> Hog's fennel, <i>Peucedanum palustre</i>
Contacts:	Senior Environment Manager, Canterbury City Council Harbour and Foreshore Manager, Foreshore Services Project Lead, Bird Wise East Kent

Acronyms

SSSI	-	Site of Special Scientific Interest
SAC	-	Special Area of Conservation
SPA	-	Special Protection Area
RIGS	-	Regionally Important Geological Site RIGS
NE	-	Natural England
ORNEC	-	Operations requiring Natural England's consent
SWOT	-	Strengths, Weaknesses, Opportunities, Threats
HLF	-	The National Lottery Heritage Fund

1. INTRODUCTION

Tankerton Coastal Park is a truly dynamic site, it includes rough grassland, mudflats, a shingle beach and many amenity areas. The majority of Tankerton Coastal Park is managed for recreation; it is a well-used coastal site by both locals and visitors, with facilities ranging from beach huts and cafes to a skatepark and sailing club. The coastal park also includes the Tankerton Slopes SSSI and the Tankerton and Swalecliffe SAC, designated for the Hog's Fennel, *Peucedanum palustre*, and the endangered Fisher's Estuarine Moth, *Gortyna borelii lunata*, respectively. This location within the coastal park requires distinctive and considered environmental management and must follow the statutory guidance for the SSSI as provided by NE. Therefore, this management plan sets out a vision for the whole coastal park as well as aims, objectives, local context, management guidance, actions and review procedures.

Although Long Rock falls into the Tankerton Coastal Park, this management plan excludes the Long Rock SSSI, its features and policy context. Due to the sites distinct habitats and threats a separate management plan can be found here:

THE VISION FOR THE COASTAL PARK IS:

To enhance and promote the Coastal Park and Tankerton Slopes SSSI and protect against both natural and human induced challenges so that it remains a welcoming and sustainable place for current residents, visitors and future generations, whilst offering a variety of high-quality seaside experiences - traditional, recreational, cultural, natural and historic.

2. MANAGEMENT PLAN AIMS

- Describe the character of the coastal park whilst outlining the different approaches to management throughout the site and the parties responsible for its varying features, including the foreshore, coastal slopes and amenity areas.
- List the routine works which need to be carried out across the coastal park in order to maintain a safe, clean and welcoming environment. And signpost future management objectives that seek to improve biodiversity, access and recreation.
- To demonstrate that CCC is fulfilling its statutory duty to conserve and enhance the SSSI whilst highlight the importance of the Tankerton Slopes SSSI and Tankerton and Swalecliffe SAC designations, as well as the objectives, which will protect and enhance its special features and conservation value.
- To clearly outline the statutory guidance and common management objectives of the Tankerton Slopes SSSI and highlighting the responsibilities of different organisations who have a role in the management of the SSSI.
- To highlight possible external challenges at the coastal park, such as climate change, and outline measures to reduce or mitigate against such influences.



3. SITE DESCRIPTION

3.1 Location

Tankerton Coastal Park sits in both the coastal Wards of Tankerton and Swalecliffe and runs from Whitstable Castle in the west to Long Rock in the east, as shown in **appendix 1**. The coastal park can be characterised as an open stretch of relatively unshielded North Kent coastline, which in turn, exposes it to abrasive onshore North Sea swells and gales.

The amenity grassland at the top of the slopes have uninterrupted views across the Thames estuary, to the Isle of Sheppey and Essex, and along the neighbouring coast towards Herne Bay. This coastal park management plan also includes the two shelters and a small area of amenity grassland outside St Anne's tennis courts situated on the opposing side of Marine Parade. The SAC and SSSI designations have similar boundaries, however the SAC also includes Long Rock; mapping for these can be found in figure 1 and 3.

3.2 Queen Elizabeth II Diamond Jubilee Field Status

As part of the Queen's Diamond Jubilee celebrations in 2012, the charity Fields in Trust designated Tankerton Coastal Park as a Queen Elizabeth II Field. This status adds a level of protection to the recreational spaces and places an in-perpetuity obligation on the council "to protect the land forever for leisure and recreation purposes."

3.3 Management Partners

- Canterbury City Council as the land owner will retain duties, such as coastal protection or grounds maintenance being responsible for the repair and maintenance of Tankerton Slopes SSSI and the Coastal Park including sea defences and recreational features.
- Foreshore Services are a key contact within the council regarding beach huts, Public Rescue Equipment, water quality and mammal rescue.
- Kentish Stour Countryside Partnership work in collaboration with the Council to manage scrub at Tankerton Slopes SSSI, following the statutory guidance of Natural England.
- Conservation charities such as Butterfly Conservation and Bumblebee Conservation Trust also conduct surveys on invertebrates in order to help inform management practices at the SSSI.
- Bird Wise East Kent also monitor bird disturbance along the coast and report any criminal/ environmentally damaging activity to the police or Canterbury City Council.
- At the time of writing, Whitstable Castle and Gardens, Tower Tea Gardens and the land adjacent with outdoor gym equipment is leased from the council to The Whitstable Castle Trust, who manage the land. Their management plan for these areas can be found here: www.whitstablecastle.co.uk/wp-content/uploads/2021/11/Management-Plan-2018-2027-Revised-Aug-2018.pdf

3.4 Local Policy Context

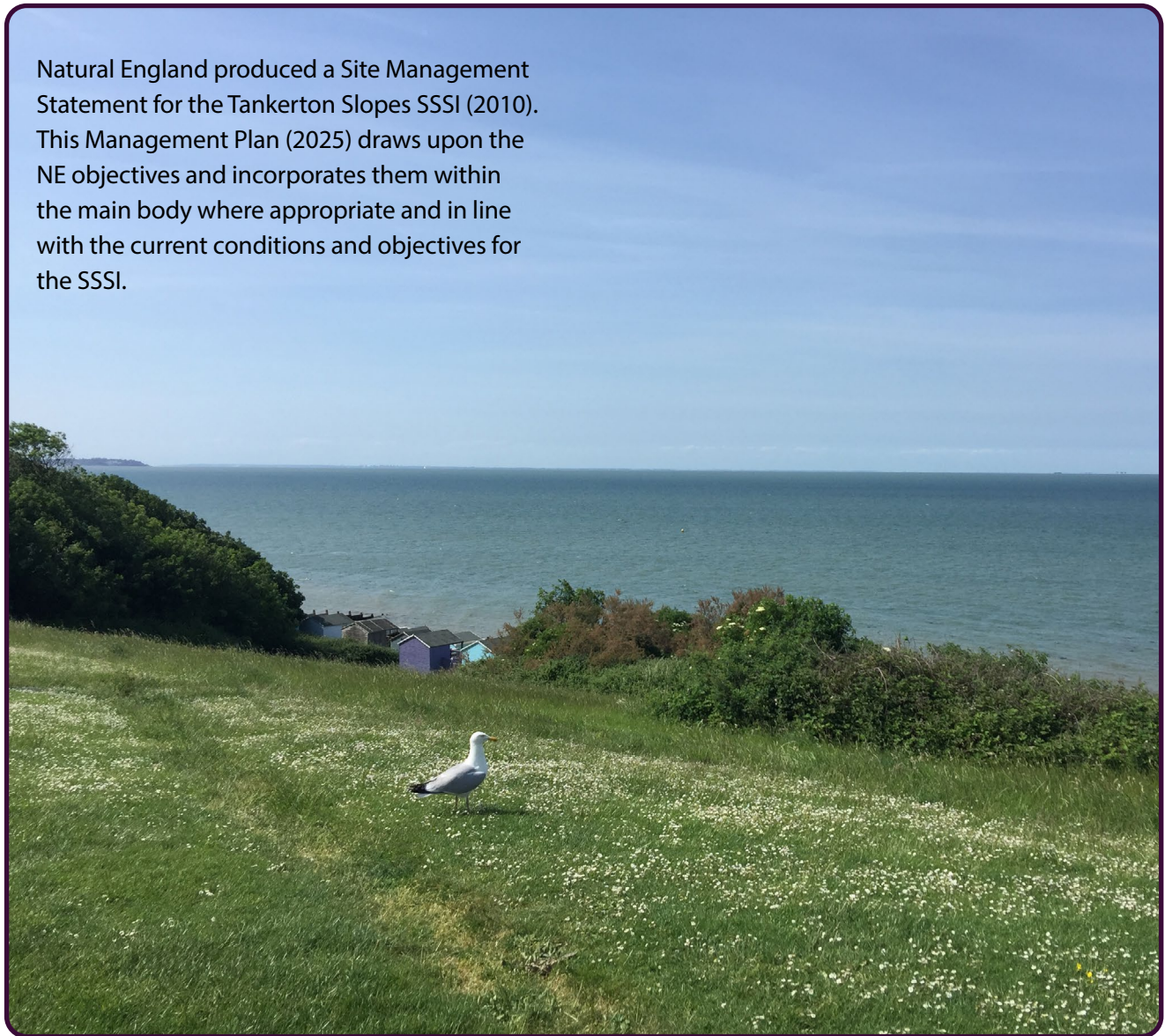
With reference to Canterbury City Council's Adopted Local Plan (2017):

- Tankerton Slopes is as designated protected open space (OS9)
- The beach and foreshore are designated as an Environment Agency Area at Risk of Flooding Zone (CC5/CC6)
- Tankerton Slopes SSSI will not normally have planning permission granted for developments that could materially harm the scientific or nature conservation interest, either directly, indirectly or cumulatively (LB6).
- Tankerton Slopes and Swalecliffe SAC is a site of international nature conservation importance and receives the highest levels of protection. No development will be permitted which may have an adverse effect on the integrity of an SAC (LB5).

3.6 Document History

In 2014, a Tankerton Coastal Park Management Plan was developed in accordance with the Queen Elizabeth II Diamond Jubilee Field designation. The key aims and actions that were not achieved during the tenure of the management plan will be referenced and reviewed later in section 7.2.

Natural England produced a Site Management Statement for the Tankerton Slopes SSSI (2010). This Management Plan (2025) draws upon the NE objectives and incorporates them within the main body where appropriate and in line with the current conditions and objectives for the SSSI.



4. TANKERTON COASTAL PARK LANDSCAPE CHARACTERISTICS

4.1 A Coastal Landscape

The Tankerton Coastal Park has sea views across the estuary as well as along the coast to Whitstable and Herne Bay. It is a site that hosts a variety of features, from hard engineering to coarse grassland upheld with a SSSI designation. A large number of benches are found on the amenity grass at the top of the slopes, as well as facilities including shelters, toilets and food outlets. Rows of beach huts also line the bottom of the slopes in certain areas. A promenade and seawall about the base of the slopes before a single beach extends out to mudflats which are uncovered at low tide. The shingle beach is divided into sections, by a series of groynes, to prevent the influences of longshore drift and coastal erosion. Central within the coastal park, the Tankerton and Swalecliffe SAC (figure 1) and the Tankerton Slopes SSSI (figure 3) are located.

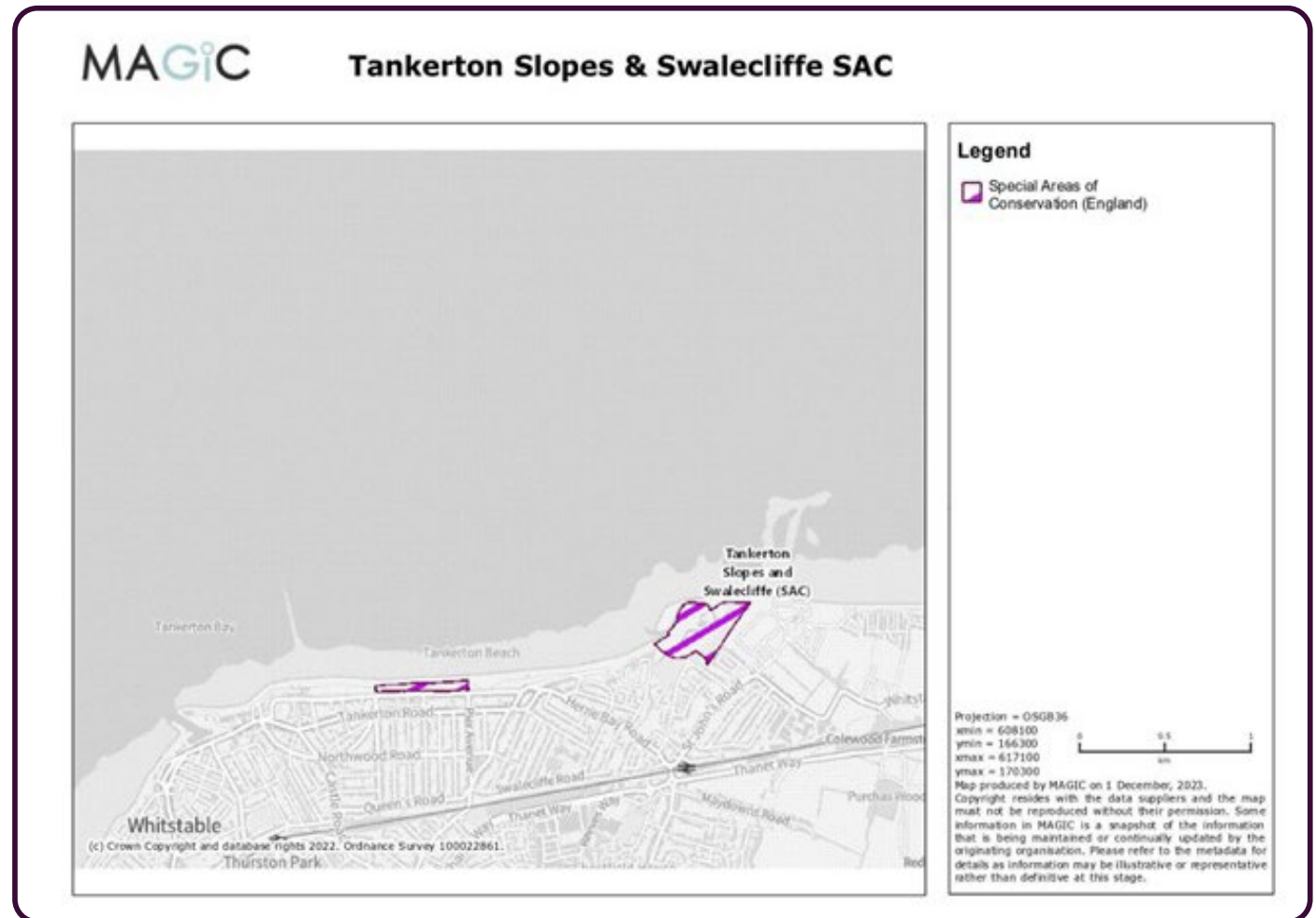


Figure 1: Map showing extent of the SAC area at Tankerton Slopes and Swalecliffe

SACs are internationally designated sites under the European Union Habitats Directive. In the UK, they are classified under the Conservation of Habitats and Species Regulations 2017. Conservation advice can be found under the NE and European Site Conservation Objectives¹. Section 5 goes into greater detail on the SSSI designation; a statutory obligation that legally underpins the SAC designation meaning the council has a legal requirement to manage the site for its key features.

Additional designations fall within the Coastal Park including a Special Protection Area (SPA), a Regionally Important Geological Site (RIGS), and a Ramsar site. However, these are more closely related to Long Rock and are effectively covered in the Long Rock Management Plan.

4.2 Habitats and Species

This coastline is noted for its important breeding and wintering bird populations, hence its national and international designations. The mudflats support a number of wading bird species, most notably the Ringed Plover, which in recent years have experienced sharp declines in population. Coastal vegetated shingle is also a key feature of the

coastline with the beach supporting species such as yellow-horned poppy, sea kale, sea holly and sea clover. Spiny restharrow and dyer's greenweed, two other locally uncommon plants are also recorded on the site. Assemblages of marine plant species also exist, including communities of algae that are limited elsewhere in the British Isles. Internationally rare invertebrates are found along the coastline including the Fisher's Estuarine Moth, *Agonopterix putridella* (a micro moth), *Eluma purpurascens* (an isopod) and the Fiery Clearwing; all of which are nationally rare. Two recent discoveries include the Sea Aster Mining Bee, a rare bee restricted to salt marshes in East Anglia and the Thames Estuary, and the Shrill Carder Bee, one of England's rarest and most threatened bumblebees. More on the local ecology can be found in the Long Rock Management Plan (2023).

4.3 Access

Recreational access to the coastal park is both highly varied and available throughout. The promenade runs from Whitstable Castle to Plough Lane, this route is also part of the Saxon Shore Way, running from Gravesend to Hastings, the England Coastal Path and the Oyster Bay Trail. The promenade

provides access to and from the foreshore for swimmers, walkers, cyclists and other visitors. The slopes are intersected with a variety of pathways allowing access to and from the top of the slopes and the pomade, whilst ensuring people do not trample on important grassland. These pathways are mostly slopes so access is relatively easy, however, some stepped access can also be found throughout. Both Marine Parade and Marine Crescent run along the south of the coastal park and provide open access and parking for visitors.



Sea Aster Mining Bee

¹ Natural England (2019)' European Site Conservation Objectives: Supplementary advice on conserving and restoring site features Tankerton Slopes and Swalecliffe Special Area of Conservation (SAC)'. Available at: designatedsites.naturalengland.org.uk/TerrestrialAdvicePDFs/UK0030378.pdf

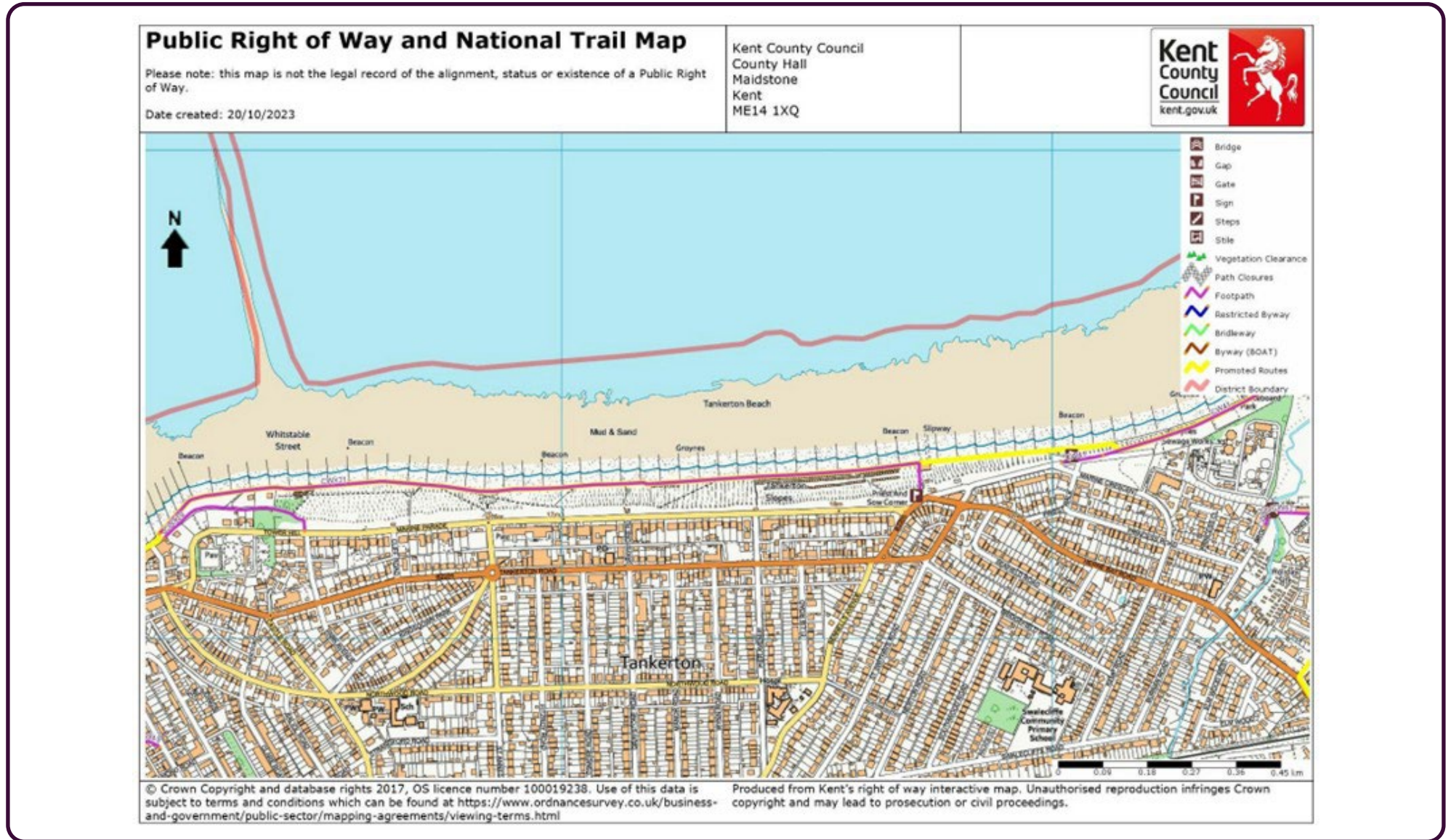


Figure 2: Map showing Public Rights of Way (PROW) across the site.

5. TANKERTON SLOPES SSSI: DESIGNATION, ECOLOGY AND MANAGEMENT

5.1 Designation and Statutory Obligation

Sites of Special Scientific interest are nationally important and a statutory UK designation under the Wildlife and Countryside Act, 1981. They are designated by NE and are designed to protect some of the best sites for wildlife and biodiversity nationally. Such sites are afforded legislative protection in the planning process. NE uses its statutory power to protect SSSI meaning the landowner must be granted with assent by NE for any planning applications or non-compliant management practices referenced on the ORNEC list².

Some exceptions apply:

1. If emergency works are required to be carried out. However, NE should be notified within 24 hours of entering the site and extra care should be given to avoid damage to special features.

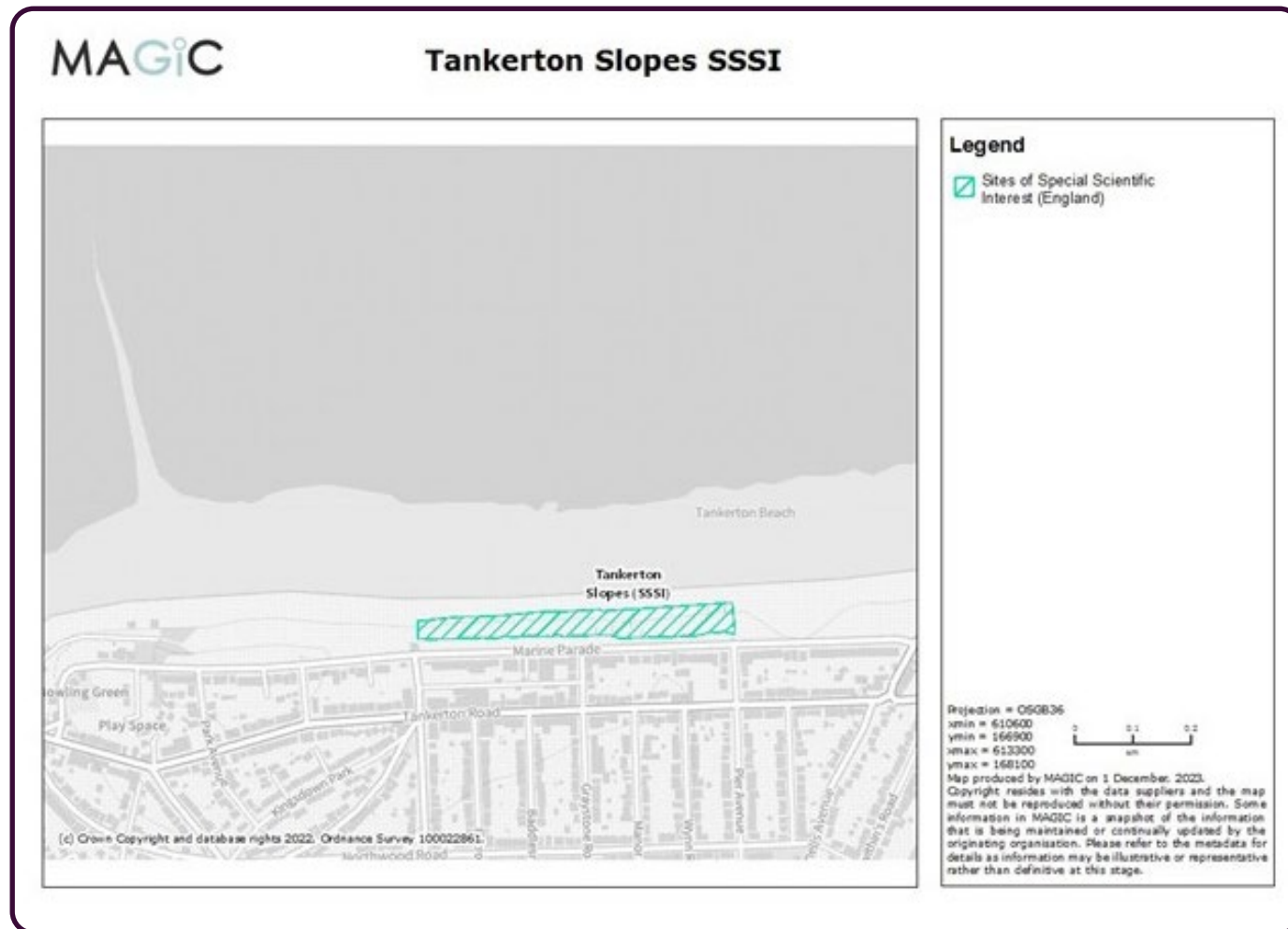


Figure 3: Map showing extent of the SSSI area at Tankerton Slopes

2 Natural England (n.d.) 'Operations likely to damage the special interest', Available at: designatedsites.naturalengland.org.uk/PDFsForWeb/Consent/1001811.pdf

2. Operations with permission from a public body or local authority (however, the relevant body must have consulted with NE for you)
3. A management practice which is not on the ORNEC list for that site.
4. Operations can still be carried out without assent by a public body after consultation with NE if it is believed the conditions attached to an assent are unacceptable. This must be accompanied with 28 days' notice before entering the site outlining that you have considered the advice, considered alternatives to reduce the impact of the required work and weighed the balance between conflicting interests.

If these conditions are not met, then the body carrying out the works could be prosecuted.

The Tankerton Slopes SSSI is designated as a habit of lowland natural grassland with its key feature being Hog's Fennel, *Peucedanum officinale*. The plant supports both the Fisher's Estuarine Moth, *Gortyna borelii lunata* and also the *Agonopterix putridella*. The current condition status of the SSSI is favourable³.

5.2 Ecology of the Tankerton Slopes SSSI

The Tankerton Slopes SSSI sits on low lying London Clay geology and now boasts a habitat of coarse grassland with a strong distribution of Hog's Fennel, *Peucedanum officinale*. Within the boundary of the SSSI, scrub and invasive plants are well managed to maintain the key features of the designation.

Hog's Fennel is a rare and threatened native species of the *Peucedanum* genus. It is sometimes mistaken for Alexanders, *Smyrniolus olusatrum*, an invasive species which threatens the distribution and survivability of Hog's fennel. The Fisher's Estuarine Moth, *Gortyna borelii lunata*, is wholly reliant on Hog's fennel as the larvae feed only on the plant itself. The larvae of the moth are stem-borers and feed within the stems of Hog's Fennel from April through to June and then below ground within the plant's rootstock during July and August. The Fisher's Estuarine Moth is extremely rare, highly threatened and a Schedule 5 protected British species, therefore, affording a high conservation priority. It is also the only UK breeding moth to have additional protection as a European Protected Species (under the Conservation of Habitats and Species Regulations 2017) due to the species' decline across its entire global range. The *Agonopterix putridella* is also a

rare species, in the British Isles it is restricted to a few locations in the south east of England, where Hog's Fennel is its plant food.

5.3 Management for Hog's Fennel, Fisher's Estuarine Moth and *Agonopterix putridella*.

Unmanaged scrub poses a significant threat to Hog's fennel and consequently routine scrub clearing is crucial in order to maintain Hog's fennel and other important species contributing to the grassland community. Alexanders also need careful management as they quickly and easily invade grasslands, reducing the diversity and prevalence of other species. Encroaching scrub should also be well maintained and cover a low percentage of the total area. The Fisher's Estuarine Moth and *Agonopterix putridella* is reliant on areas of rough grassland where Hog's fennel grows. Long coarse grasses are required to enable the moth to lay eggs. Where both are found in abundance, the moth stands the best chance of survival. The most favourable density is one Hog's Fennel plant per square metre. Further to this, Hog's fennel must also remain at a height that allows the continued growth of neighbouring coarse grasses. Too low and it will reduce the chances of freshly hatched larvae migrating to a Hog's fennel plant.

Further guidance can be found in the 'European Site Conservation Objectives: Supplementary advice on conserving and restoring site features'⁴.

3 Natural England (n.d.) 'Designated Sites View: Tankerton Slopes SSSI', Available at: designatedsites.naturalengland.org.uk/SiteFeatureCondition.aspx?SiteCode=S1001811&SiteName=Tankerton%20Slopes%20SSSI

4 Natural England (2019) 'European Site Conservation Objectives: Supplementary advice on conserving and restoring site features Tankerton Slopes and Swalecliffe Special Area of Conservation (SAC)'. Available at: designatedsites.naturalengland.org.uk/TerrestrialAdvicePDFs/UK0030378.pdf

6. COASTAL PARK SWOT ANALYSIS

6.1 Key Findings

Amenity Grassland

At the top of the slopes, where no ecological designations are in place, the large stretch of open amenity grassland offers the space to deliver on improvements for Tankerton Coastal Park. Although the area is considered recreational it is not utilised for any particular purpose. Therefore, it presents the potential for new initiatives such as an event space bringing the community together. This management hopes to inspire ideas and open up discussion within the community on how Tankerton Slopes may be better utilised.

Infrastructure

There are a significant number of memorial benches along Tankerton Slopes, where demand outstrips supply. Over the years, the change of supplier has resulted in an inconsistency of bench type, method of installation and left a disorganised aesthetic across the landscape. Accordingly, a bench review has been undertaken by the council, and it has

been deemed inappropriate to install any additional benches along Tankerton Slopes. In response to the lack of future memorial benches, the existing shelters have been identified as locations which may be suitable for memorial plaques, providing the plaques do not impede on shelters core purpose of being a place for people to relax and take refuge from poor weather conditions. The shelters could also be utilised for greater interpretations.

Potential trip hazards have been identified in the form of protruding manhole covers. If footfall is to increase with potential improvements to the amenity areas, then such issues will have to be addressed in order to improve accessibility and avoid possible accidents. Other infrastructure improvements needed across the coastal park were noted, including:

- Some of KCC and CCC's parking signage is damaged and needs to be replaced.
- Missing handrails in sections of the pathway.
- The view from the Sea View Cafe is impeded and disorganised, this could be improved by

removing unwanted / redundant infrastructure, painting the outside wall of toilets or installing a green roof on top of the building.

Marine Crescent Triangle

The triangle of amenity grass adjacent to Marine Crescent offers the potential for biodiversity improvements in line with Canterbury City Council's Pollinator Action Plan. The grass is currently under a routine amenity grass cutting regime, however, it is not a highly used area of the Tankerton Coastal park. Therefore, a meadow grass cut may be a suitable alternative for part of, if not all the area. Another option would be to introduce pollinator beds which would provide a greater diversity of flora, an established community group may provide the management and care needed to ensure the success of such a project.

Dense scrub also exists to the east of this area. The current management sees alternating cutting back of the scrub on a different third of the patch every few years. However, this management routine has since been reviewed and deemed unnecessary as

it has an adverse effect on the biodiversity in this location, particularly roosting birds. Therefore, any existing management on the scrub will look to be limited except for the management and retention of its margins.

Grassland next to Skatepark

This area has been identified in the Long Rock Management Plan as a site that would be beneficial for Hog's Fennel due to its proximity to preexisting habitat. It also falls within the Thanet Coast SSSI and if the introduction of this plant species were successful an extension of the Tankerton and Swalecliffe SAC may need to be considered. This patch of grass is currently managed for amenity and cut regularly, however, sees limited public use. Therefore, the management of this area may be brought into line with the approach at Long Rock's grassland and managed as and when for coarse grassland and Hog's Fennel. Furthermore, in late 2023 Southern Water conducted a reptile survey, with the hope to provide a hibernacula for amphibians and reptiles.



Hog's Fennel plant

6.2 SWOT Analysis

<p>Strengths</p>	<ul style="list-style-type: none"> • Designated as a Site of Special Scientific Interest (SSSI) and Special Area of Conservation (SAC). • The community is often in contact with council over various matters, demonstrating strong community engagement in the area. • The Coastal Park is highly accessible for all users, with a number of public toilets along Marine Parade. • Park run takes place twice a week, signposting strong community engagement in area
<p>Weaknesses</p>	<ul style="list-style-type: none"> • Alexanders thrive in these coastal conditions at the possible expense of Hog's Fennel. • Inconsistent and damaged fencing around the SSSI. Potentially encouraging access into the important habitat. • Toilets by the Sea View Cafe are indistinctive and impede views of the natural environment. • Benches and sea shelters have restricted sea views due to overgrown scrub in the wrong areas. • Grass in front of Sea View Cafe is liable to water logging. Area is also a pinch point and gets extremely muddy. • A large number of manhole covers are exposed along the top of the slopes, acting as a trip hazard. • Limited shade along the top of the slopes, increasing risk to the public especially with a warming climate. • Benches across the top of the slopes are inconsistent and poorly spaced out. • The mound along PROW in front of Lang Court creates a pinch point for pedestrians using the path. • Rotary clubs planting in the old boating pool appears degraded. • Only one drinking water fountain on the beach and in poor condition. • Difficulty in getting volunteers to help with the management of SSSI. • Victorian pleasure grounds (woods behind Beacon House) overgrown, trees suffering from Dutch Elm and feels unsafe to walk through.
<p>Opportunities</p>	<ul style="list-style-type: none"> • The new cabinet position for coastal towns may broaden opportunities and initiatives for positive management. • A review of the maintenance schedule will tackle issues of overgrowth and improve biodiversity value of the area. • Subject to resources, where areas look run down, there is opportunity for resource efficient improvements such as painting etc. • Improve sea views in amenity areas. This could involve cutting back scrub and Alexanders. • Tree planting along the top of the slopes to provide shade for visitors in warmer months. • Triangle of amenity grassland adjacent to Marine Crescent provides biodiversity opportunities with relaxed management. • Scheme for care home which allows them to use land in front of Lang Court for community allotments / gardening etc . • The 20th anniversary of Rotary clubs' feature may deliver improvements to raised bed. • Increase the number of drinking water fountains to increase resilience to hotter summers. • Improve drainage in front of the sea view cafe to reduce ponding of surface water. • Opportunity for amenity grassland at the top of Tankerton Slopes to become more of a concession / event space. • Wrap around interpretation signage by the Rotary Club memorial, providing geographical context when looking across the horizon. • Large amenity spaces offer the opportunity to install more active features such as outdoor gym, play etc.
<p>Threats</p>	<ul style="list-style-type: none"> • Invasion of Alexanders may lead to the decline of Hog's Fennel and consequently the Fisher's Estuarine Moth and <i>Agonopterix putridella</i>. • With rising sea levels and greater risk of intense storms and on shore gales, comes higher chances of flooding and increased soil salinity. • Strong onshore winds cause salt damage to the northern facing side of trees • Other plant encroachment such as ivy on the SSSI • Dogs off lead and dog walkers using non-PROW routes throughout Long Rock SSSI, causing significant bird disturbance.

7. OBJECTIVES AND GUIDANCE FOR MANAGEMENT

7.1 SMART Objectives

Amenity, Recreation and Leisure

- Promote the Tankerton Coastal Park as an event / concession space and install necessary equipment to facilitate, with the aim of seeing at least one large community initiative each year.
- Improve the recreational value of the coastal park by installing one feature by 2028 that actively engages local residents and visitors. This could be anything from improving play or gym equipment or to installing a pump track, parkour (free running) or grass maze.
- Seek to install permanent forms of shading throughout the Coastal Park to protect visitors and provide respite in a warming climate. This may be natural (i.e. trees) or physical (i.e. art installations). Aim for a variety of four shading opportunities by 2028.
- Improve the signage throughout the coastal park to engage visitors. Install wrap around interpretation signage at a viable location which provides geographical context to views across the horizon. Agree on a suitable area and install by 2026.

Habitat Management

- Reduce management of scrub and grassland on Marine Crescent Triangle to improve habitat for breeding and roosting birds, pollinators and other wildlife. Have management contract changed by the end of 2026.
- Reduce management of amenity grass next to skatepark and engage with local community/ Friends of Tankerton to collect Hog's Fennel seed from Long Rock to establish at this new site. Aim for Hog's Fennel to return by 2028.
- Continue to engage subcontractors to prevent Alexanders at SSSI. If Alexander's are found on site or in close proximity, cut and clear from site before they reseed. Aim for no Alexanders within the SSSI boundary by 2026.

Infrastructure

- Continue to report damaged infrastructure as soon as it is discovered to ensure coastal park is a safe and welcoming place for visitors. Each year review all infrastructure with the aim of finding limited cases to report.

- Engage with artists (local to international) to improve the aesthetic of council owned infrastructure. As a start, seek to have a mural painted on public toilets near Sea View Cafe by 2026.
- Explore the feasibility of installing a green roof on top of the public toilets near Sea View Cafe by 2026 to improve the appearance of views from the Sea View Cafe.
- Improve the drainage outside Sea View Cafe as the area has high footfall and often becomes extremely muddy and inaccessible during the wetter months.
- Engage community in annual review of the management plan, starting in 2026.

7.2 Review of Tankerton’s Coastal Park Management Plan 2014 to 2024 Actions

Completed actions	Incomplete actions not carried forward	Actions carried forward
<p>The actions listed below are those that concerned a one-off project. Routine practices have also been completed over the years, however, are excluded from this list as they have been carried forward in the new action plan.</p> <ul style="list-style-type: none"> • Provide an outdoor gym in the amenity area on the top of the slopes • Upgrade play area at Swalecliffe (Plough Lane) – link with Children’s centre • Replace beacon at western end 	<p>Actions here have both not been completed and removed from the management plan, due to them now being redundant within the current landscape and local context.</p> <ul style="list-style-type: none"> • Whitstable Classic car show • Provide series of Bar-b-que stations • Interpretation leaflets 	<p>Two types of actions have been carried forward, firstly, those which are routine and must be completed on a regular basis to ensure the special features of the SSSI are protected and the coastal park remains safe and welcoming. Secondly, those which were not complete within the previous documents tenure and have remained important despite the change in local context over the years. Any actions carried forward have been adapted to fit current need and resource, and can therefore be found in the new detailed action plan below.</p>

7.3 Detailed Summary of Management

Please note: Activities with (*) require consultation with NE if within the SSSI. Location specific/priority actions are detailed in **Appendix 2**.

Activity	Location within site	Guidance for work to be carried out	Purpose of work	Deadline/Timing	Lead
Routine habitat / grounds maintenance					
Management of scrub/trees for Hog’s Fennel*	Throughout grassland areas, in particular the SSSI.	Routine scrub clearing. Scrub should be cut by hand outside of the bird nesting season. Brash should be removed from the site. Scrub cover should be kept to less than 20% of total site area with a focus on areas where Hog’s fennel is being smothered.	To prevent encroachment of Hog’s Fennel and general overgrowth. Clearance to allow for Hog’s fennel germination. To maintain a suitable habitat for the Fisher’s Estuarine Moth. To improve the view from the picnic areas on slopes.	On-going (October - March)	CCC Environment Team/ Sub-contractors
Control of Alexanders*	Throughout site where required with a special focus on SSSI	Should be hand pulled and removed from the site to prevent re-seeding. Cutting back twice a year. Any work on Alexanders which requires machinery or anything other than hand pulling will need assent from NE.	To prevent Alexanders from taking over and reducing plant diversity.	On-going (Before seed ripening in June/ July)	CCC Environment Team/ Sub-contractors

Activity	Location within site	Guidance for work to be carried out	Purpose of work	Deadline/Timing	Lead
Mowing of the amenity/meadow/conservation grassland throughout the coastal park.	Areas and boundaries as detailed in CCC contract maps.	Any Hog’s Fennel Plants encroaching on the grassland should be left and care must be taken to cover these plants during the mowing.	To ensure amenity areas are accessible and welcoming for local residents and guests. To protect the distribution of Hog’s Fennel in more vulnerable areas.	On-going (Conservation grass April + June)	CCC Contracts
Mowing of footpath	Throughout the coastal park, including within SSSI.	An area of no more than 1 metre may be cut either side of footpaths. Any Hog’s Fennel Plants encroaching on the footpaths should be left and care must be taken to protect these plants during the mowing.	Paths are not encroached by vegetation and remain accessible.	On-going (April + June)	CCC Contracts
Conduct wildlife Surveys in SSSI.	Tankerton Slopes SSSI	Contact local nature groups to conduct wildlife surveys regarding species of significance.	To develop a better understanding of ecological trends on site.	On-going	Local conservation groups/organisations

Activity	Location within site	Guidance for work to be carried out	Purpose of work	Deadline/Timing	Lead
Changes to habitat/grounds maintenance					
Reduce management of scrub and grassland.	Marine Crescent Triangle	<p>Stop all management on scrub except for margin retention.</p> <p>Reduce the number of cuts on amenity grass.</p> <p>Change mapping.</p>	To improve habitat for birds, pollinators and other wildlife.	On-going 2024/25	CCC Contracts
Extend grassland and introduce Hog's Fennel to land next to the skatepark.	Land next to the skatepark	<p>Collect seeds from existing Hog's Fennel plants late September/ early October.</p> <p>Sow into small patches of bare ground with coarse grasses.</p> <p>Alternatively, sow the collected seeds in pots in the autumn. Grow and plant out the following autumn for better establishment rate.</p> <p>Alternative option can be more easily achieved with the involvement of Friends group</p>	To increase habitat for Fisher's Estuarine Moth.	2026 (September / early October)	Kentish Stour Countryside Partnership and volunteers/Friends group.

Activity	Location within site	Guidance for work to be carried out	Purpose of work	Deadline/Timing	Lead
Seek to reduce/stop mowing regime.	Behind beach huts	Reduce the number of cuts on amenity grass. Change mapping.	To restrict access and limit graffiti on the back of beach huts and improve biodiversity.	On-going 2025/26	CCC Environment Team/ CCC Contracts
Review grass cutting regime surrounding beach huts	Throughout the beach hut area.	Undertake a review of the grass cutting regime and consider the use of alternative equipment. Liaise with local beach hut owners to understand the desired regime in location. Change mapping if required.	To ensure the management currently in place is most practical. To reach an agreement with current beach hut owners that is least controversial.	On-going 2026	CCC Environment Team/ CCC Contracts
Woodland audit	Victoria pleasure ground behind Beacon House (woods)	Audit of trees as many are suffering from Dutch Elm Disease. Remove dead / dying trees.	To improve the wood and open up space to ensure better safety for those walking through, especially at night.	2026	CCC Environment Team / Sub - contractors
Install low maintenance green roof	Public toilets in front of Sea View Cafe	Review the infrastructure of the public toilets and if appropriate install green roof	To improve sea views, improve biodiversity value of the building itself.	2028	CCC Environment Team/ CCC Engineers

Activity	Location within site	Guidance for work to be carried out	Purpose of work	Deadline/Timing	Lead
Consider review of leases	Tower Tea Gardens and outdoor gym / picnic area	When current lease expires review and renegotiate, and consider returning land to CCC as long as resource and budget permit.	To review current management and potentially bring Tower Tea Gardens back into CCC management	2026	CCC Environment Team/Whitstable Castle Trust/CCC Contracts/ CCC property and regeneration.
Routine infrastructure maintenance					
Monitoring of infrastructure (bridges, pathways, promenades)	Throughout the site.	Ensure signage is intact and enforcement messaging is up to date. Replace when necessary. Ensure all infrastructure has not been damaged or vandalised. Monitor bridges, pathways, promenades and other infrastructure used by the public.	To improve the welcoming aesthetic of the site. To ensure public safety.	On-going Monthly	Foreshore Services/ Birdwise East Kent/CCC Environment Team
Inspect and maintain the sea defences along the Tankerton frontage.	Where required		The coastal slopes are also monitored for signs of any slope movement. To ensure public safety and sea defences are effective.	On-going Yearly	CCC Coastal monitoring team

Activity	Location within site	Guidance for work to be carried out	Purpose of work	Deadline/Timing	Lead
Additional/improvements to infrastructure					
Install power to facilitate possible future events.	Where most appropriate.	In a location which is best suited for larger events requiring power.	To increase recreation value of the site.	2025	CCC Environment Team
Initiative to provide shading.	Along the top of Tankerton Slopes.	Either natural or physical interventions such as tree planting or shelters.	To protect local residents and visitors in a warming climate. To create an attraction at the Tankerton Slopes Coastal Park.	2028	CCC/Community groups
Install an active recreational feature.	Where appropriate within the coastal park.	Seek larger scale projects through s.106 funding or alternatives. This could be natural play (i.e. log climbing frame) / outdoor gym equipment, a grass maze, water sports equipment hire concession etc.	To increase recreation value of the site.	2028	CCC Environment Team/ CCC Contracts etc.

Activity	Location within site	Guidance for work to be carried out	Purpose of work	Deadline/Timing	Lead
Install new and engaging signage.	Where appropriate within the coastal park.	Wrap around interpretation signage that provides geographical context to views across the horizon. Possible centralised area for signage information/ signage hubs at key entrance locations	To increase recreation value of the site.	2025	CCC Environment Team/ CCC Marketing Team
Install drainage	Outside Sea View Cafe.	Liaise with CCC engineers to complete works.	To reduce flooding and improve this recreational area for local residents and visitors.	2028	CCC Environment Team/ CCC Engineers
Review and upgrade stand pipes and showers	Where required.	Liaise with Foreshore Services to better understand the need for upgrades.	To ensure facilities are in good working order and people can shower when needed.	2026	Foreshore/CCC Environment Team
Repair steps	From the outdoor gym/ picnic area down to Beacon House.	Repair steps as required post review by CCC engineers/Contractor	To improve accessibility and safety down to the beach as well as improving the aesthetic of the area.	2025	CCC Environment Team/ CCC Engineers

Activity	Location within site	Guidance for work to be carried out	Purpose of work	Deadline/Timing	Lead
Explore opportunities to create disabled access to sea from the promenade.	Backshore to foreshore	Install a large mat to aid access. Install beach wheelchair access.	To improve accessibility and allow those who are disabled to access water.	2025	CCC Environment Team/ CCC Engineers
Community engagement					
Initiative / space for artists to install work.	Along the top of Tankerton Slopes.	Liaise with the community. Installation of local art/ sculptures. Possibly tie into previous action (initiative to provide shading)	To increase recreational value of the site.	2027	CCC Environment Team, Foreshore Services, Contracts
Improve the aesthetic of buildings with murals.	Public toilets by Sea View Cafe.	Engage with local artists to improve building.	To increase recreation value of the site and improve infrastructure and the view from the cafe.	2025	CCC Environment Team/ Community groups
Community clean ups	Throughout Coastal Park	Community organised litter picks	To ensure Coastal Park remains clean and welcoming.	On-going	Friends of Tankerton

Activity	Location within site	Guidance for work to be carried out	Purpose of work	Deadline/Timing	Lead
Concession space - NCI coastguard hut	Beach	If NCI hut goes up for sale it could be used as a concession space/water sports rental/community sauna etc. Facilitate positive discussions around its future use.	To improve the recreational value of coastal park.		CCC Environment Team/ CCC property and regeneration/Private Company
Retain coastal award (blue flag)	Whole Coastal Park	Continue to monitor water quality and adhere to the requirements of the coastal award.	To encourage visitors to the coastal park and ensure pure water, clean coasts, safety and access for all.	On-going	Foreshore Services/CCC Environment Team
Enforcement					
Formal signage for Dog control area	Where appropriate within the coastal park.	Create more formal signage for Dog control area - affix to sea wall, not just sprayed on the ground	To increase clarity on PSPO's	2025	CCC Environment Team/ CCC enforcement

8. MONITORING, REPORT AND REVIEW

The effectiveness of this management plan can be determined through a review of the SMART objectives and whether they have been achieved or not. If the objectives are not met, such a review will aim to inform a more robust approach for the next instalment post 2032.



Agonopterix putridella

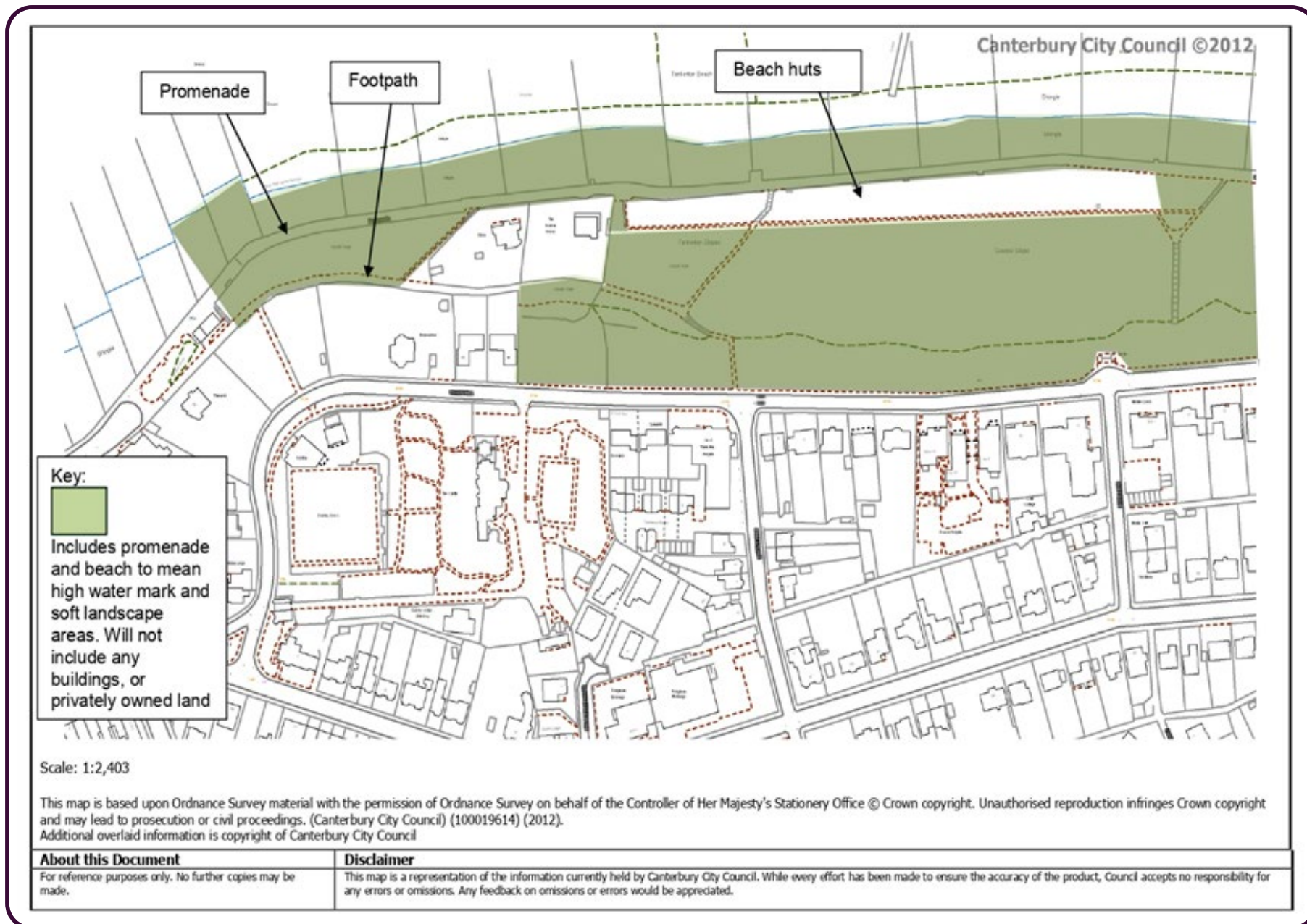


Fisher's Estuarine Moth on Hog's Fennel

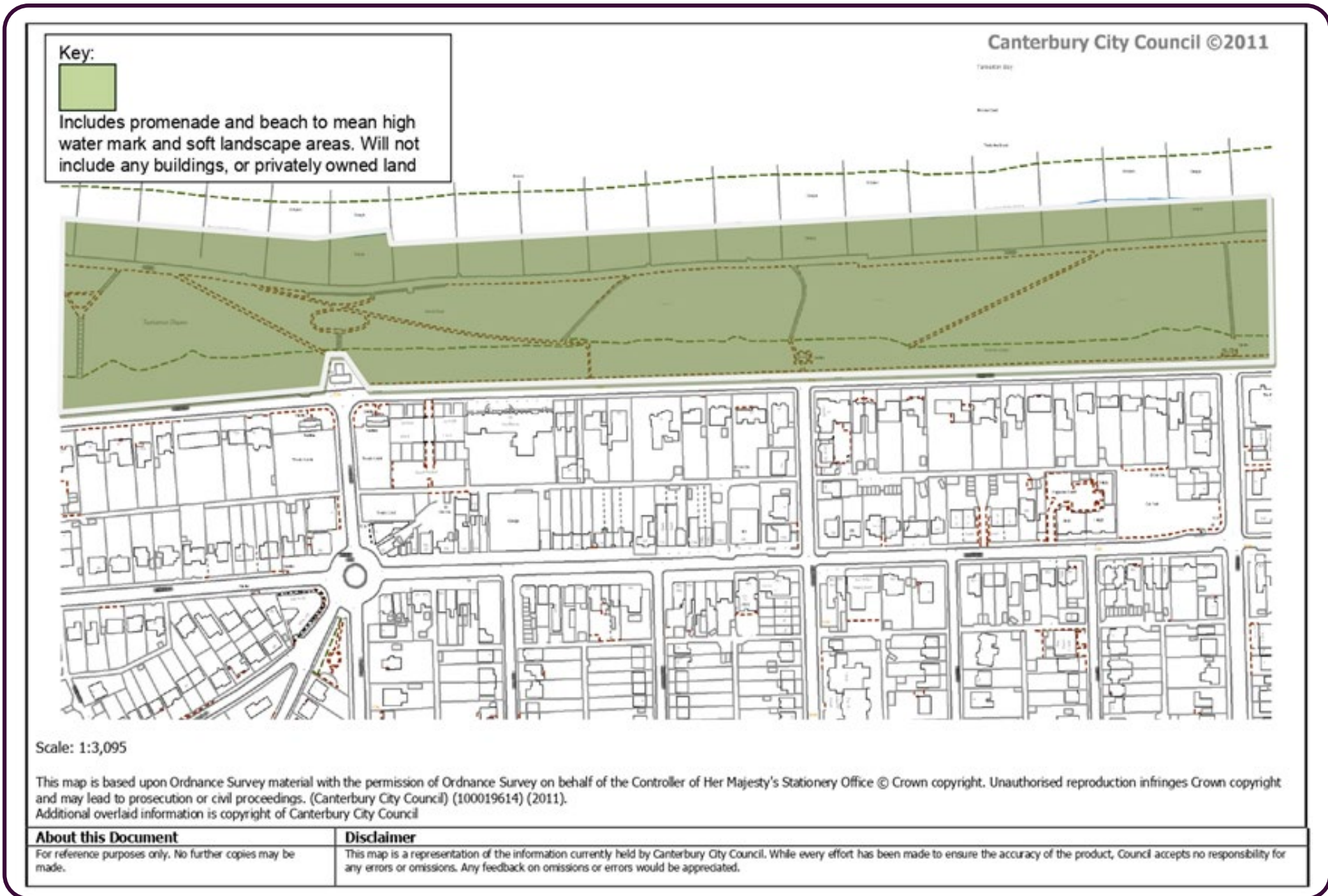
Tankerton Coastal Park Management Plan

APPENDIX 1

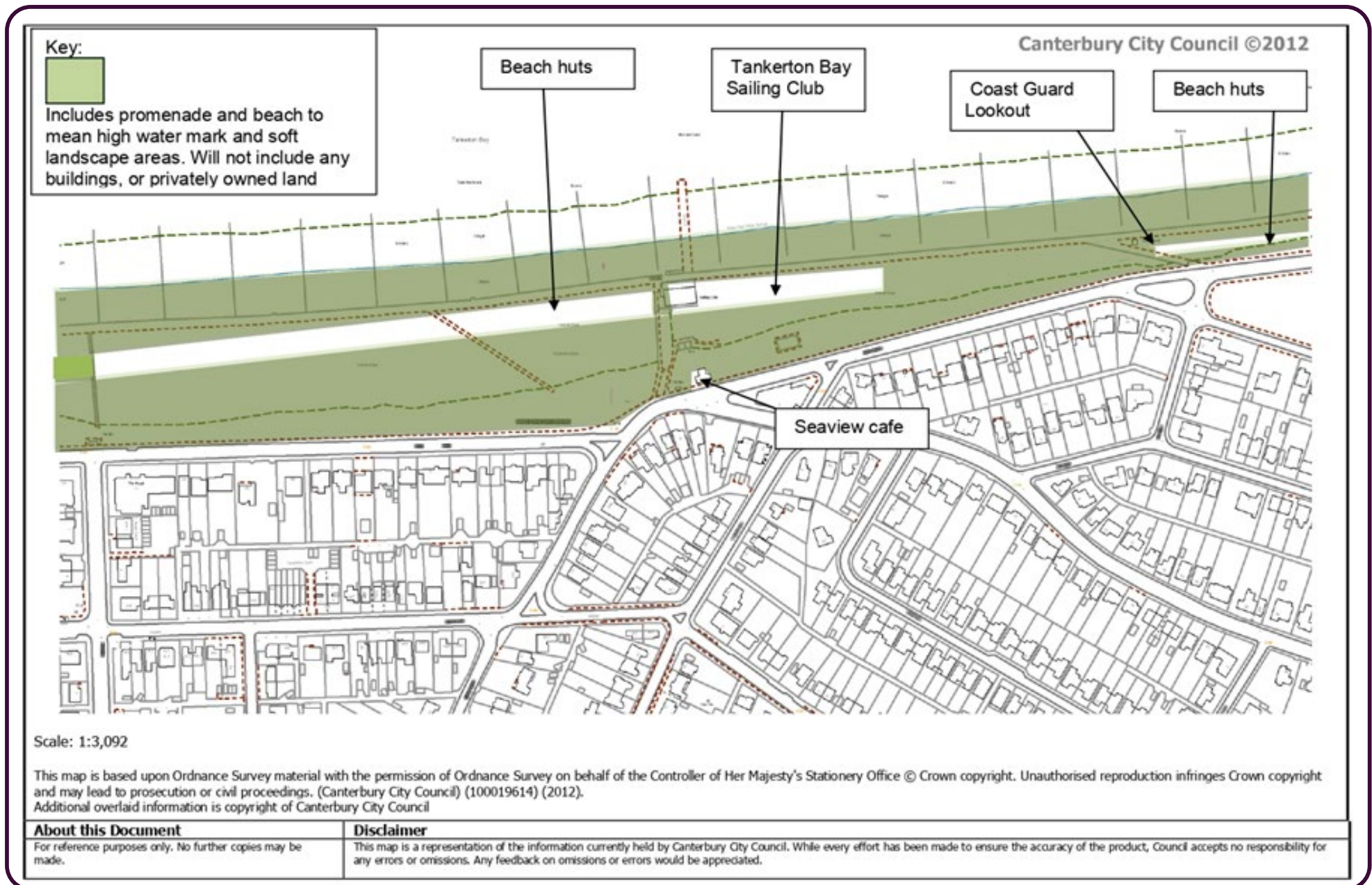
Tankerton Slopes Coastal Park mapping (west)



Tankerton Slopes Coastal Park mapping (west central)



Tankerton Slopes Coastal Park mapping (east central)



Tankerton Slopes Coastal Park mapping (east)

